

Peter Ilyich Tchaikovsky
Symphony No. 6 in B Minor, Op. 74 (Pathétique)

Viola

I

Adagio

div. Fag. I.

mf *sf* *p* *mf* *sf*

mp *sf* *p* *mp* *sf*

p *mf* *mf* *p* *mf* *mf* *pp* *mf* *pp*

p *p* *p* *p* *p*

p *p* *p* *p*

pp *pp*

ritenuto

Allegro non troppo

A

Measures 12, 19, 23, and 30 are indicated on the left margin.

VIOLA

34 *p* *p* *p* *p* *mp*

37 *cresc.* *f* *mf* *p* *pp* *saltando*
cresc. *mf* *mf* *p* *pp* *saltando*

43 *unis.* *p*

47

50 *B* *mp*

53 *pp*

56 *pp* *p* *p* *mp*

59 *mp*

61

Detailed description: This page contains the musical score for the Viola part, measures 34 through 61. The score is written in B minor (two sharps) and 3/4 time. It features a variety of rhythmic patterns, including sixteenth-note runs, eighth-note figures, and dotted rhythms. Dynamic markings range from *pp* (pianissimo) to *f* (forte). Performance instructions include *cresc.* (crescendo), *mf* (mezzo-forte), *mp* (mezzo-piano), *pp* (pianissimo), *saltando* (leaping), and *unis.* (unison). A section starting at measure 50 is marked with a 'B' and a 'V' above the staff. The score is divided into systems, with measure numbers 34, 37, 43, 47, 50, 53, 56, 59, and 61 clearly indicated at the beginning of their respective systems.

VIOLA

63 *p*

65 *mp* *mp* *f* *détaché* **Un poco animando** 1

69 *ff* *ff*

72 **Un poco più animato**

75 *f* *mf* *mp* **Adagio** 4

84 *ritard. molto* *Vcl.* *pp espress.* *incalzando con sord.* *mp > ppp*

89 **Andante** *VI. I.* *mf* *ritenuto*

97 *come prima* *p* *mf* *riten.* *mf*

101 **Moderato mosso saltando** *p*

104 *poco più f* *poco cresc.*

107 *mf* *dim.* *p* **E**

VIOLA

110

113 *poco più f* *poco cresc.* *mf*

116 *dim.* *p*

119 *cresc.* *mf*

122 *poco cresc.* *f*

125 *riten.* *2* *senza sord.* *ff*

Andante *senza sord.*

130 Fl. II *mf*

134 *incalzando* *ff* *riten.* *mf* *f*

138 *incalzando* *ff* *riten.* *mf* *f*

Moderato assai *G*

142 *mf* *mp* *p*

148 *rallentando* *pp* *dim.* *ppp*

VIOLA

Adagio mosso *ritard. molto*

154 *div. ppp <p> ppp* *ppp <p>* *pppp* *pppp* *pizz.*

unis. Allegro vivo
arco

161 *ff* *sf* *sf* *sf* *sf* *sf*

164 *sf* *sf* *ff* *sf* *sf* *sf*

167 *sf* *sf* *sf* *sf* *sf* *ff*

H feroce

171 *ff*

173 *ff*

176

come prima

179 *V*

181 *I* *sempre ff*

184 *ff*

VIOLA

187 *fff*

190

197 *K* *5*

205 *p* *V* *7* *1* *p* *1*

209 *più f* *mf* *cresc.* *f*

213 *ff*

216 *dim. un poco* *V* *1*

220 *mf diminuendo* *p* *V*

224 *dim.* *pp*

228 *M* *V* *pp* *V* *pp*

233 *pp* *3*

Detailed description: This page of a musical score for the Viola part of Tchaikovsky's Symphony No. 6 in B Minor, Op. 74 (Pathétique) covers measures 187 to 233. The score is written in B minor and 3/4 time. It features various dynamics including fortissimo (fff), piano (p), mezzo-forte (mf), fortissimo (ff), and pianissimo (pp), along with crescendos and decrescendos. Performance markings include accents, slurs, and fingerings (e.g., 1, 5, 7). Technical markings such as 'K' and 'L' are present. The score includes several measures of rests and complex rhythmic patterns.

VIOLA

240 *mf* *cresc.* *f cresc.*

243 *ff* *fff*

246 *f*

249 *sf* *sf* *sf* *sf* *ff*

253 *ff*

258 *pp* *cresc. molto* *ff*³

263 *3*

265 *3*

267 *P* *div.* *fff* *fff*

270 *unis.* *fff*³ *ff* *3*

277 *Q* *sempre ff* *div.* *fff*

Detailed description: This page of a musical score for the Viola part of Tchaikovsky's Symphony No. 6 in B Minor, Op. 74 (Pathétique) covers measures 240 to 277. The score is written in B minor and 3/4 time. It begins at measure 240 with a mezzo-forte (*mf*) dynamic and a crescendo (*cresc.*). The music features a series of eighth-note patterns. At measure 243, the dynamic increases to fortissimo (*ff*), and by measure 246, it reaches fortississimo (*fff*). Measure 249 shows a series of sforzando (*sf*) accents. From measure 253 to 258, the dynamic is fortissimo (*ff*), with a piano (*pp*) section starting at measure 258, followed by a very strong crescendo (*cresc. molto*) leading back to fortissimo (*ff*) with triplets. Measures 263 and 265 consist of triplet patterns. At measure 267, the dynamic is fortississimo (*fff*), and the texture changes to a piano (*P*) section with a *div.* (divisi) instruction. Measure 270 features a unison (*unis.*) section with fortississimo (*fff*) dynamics and triplets. The page concludes at measure 277 with a fortissimo (*fff*) dynamic and a *div.* instruction.

VIOLA

285 *div. largamente, forte possibile* **ff**

298 **R** **ff** **fff** **p** **Andante come prima** **Vel.** **pp** **incalzando**

306 **p** **mp**

310 **div.** **poco cresc.** **riten.** **mf** **pp** **p** **incalzando** **S** **V₃** **3** **fff**

poco cresc. **riten.** **mf** **pp** **p** **incalzando** **fff**

314 **riten.** **mf** **ff** **mf** **Tempo I**

mf **ff** **mf**

320 **unis.** **riten.** **Meno** **3** **f** **mf** **p** **pp**

329 **Animando rall.** **quasi Andante mosso** **adagio pizz.**

2 **1** **FLI** **p**

338

343 **U** **7** **pp**

VIOLA

II

Allegro con grazia

pizz.

mf

div. unis.

f mf

arco pizz. arco

sempre mf

1. 2. div. arco

mf

più f mf

f p.

pizz.

mp mf mf

B

arco

f mf

C

mf f mf

VIOLA

47 *p* *f*

53 *pizz.* *mf* *f* *mf*

57 *con dolcezza e flebile*
D *arco* *p*

63 *E* *sf* *p*

68 *pp* *mp* *f* *p*

74 *V*

80 *G* *sf* *f* *mf* *f* *mf* *f*

86 *mf* *f* *mf* *p* *mf*

91 *V* *div. V* *3* *p* *mf* *p* *mf* *1*

96 *H unis.* *pizz.* *mf*

101 *div.* *unis.* *f* *mf* *I*

106 *arco* *pizz.* *arco* *div.* *mf sempre*

VIOLA

112 *mf* *più f* *mf*

117 *f* *p*

122

127 *pizz.* *p* *mf* *mf*

131 *L*

135 *f* *arco* *mf* *mf*

139 *M* *f* *mf* *p* *f*

145

150 *pizz.* *N* *1* *arco* *1* *1* *mf* *f* *mf* *mf*

157 *p* *mf* *p* *mf*

163 *O* *p* *poco cresc.* *mf* *dim.* *mp* *p*

171 *P* *1* *V* *1* *V* *pizz.* *pp* *pp* *pp* *pp*

Detailed description: This page contains the musical score for the Viola part of Tchaikovsky's Symphony No. 6 in B Minor, Op. 74 (Pathétique), measures 112 through 171. The score is written in B minor (two sharps) and 3/4 time. It features various dynamics including *mf*, *f*, *più f*, *p*, *pp*, *pizz.*, *arco*, *poco cresc.*, *dim.*, and *mp*. Performance markings include *L*, *M*, *N*, and *O*. There are also first and second endings marked with '1' and '2'. The score includes triplets, slurs, and various articulation marks such as accents and staccato marks.

VIOLA

III

Allegro molto vivace

div. *p*

6 *p* *pizz.* *mp* *pizz.* *mp*

12 *mf* *arco* *mp* *p* *dim.* *pp*

17 *mf* *p*

21 *p* *pizz.*

27 *p poco a poco cresc.* *mp*

p poco a poco cresc. *mp*

VIOLA

31 **D** *f* *f* *mf* *mp*

35 *p* *p* *p* **1**

40 *pizz.* *p* *mf* **E** **1** (12/8)

46 *arco* *f* *arco* *f* *ff* *ff*

50 **F** *pp* *cresc.* *pp* *cresc.*

54 *unis.* *mp* *f*

57 *pp* *mp*

60 **G** *f* *p cresc. poco a poco*

Detailed description: This page of a musical score for the Viola part of Tchaikovsky's Symphony No. 6 in B Minor, Op. 74 (Pathétique). The score is written in B minor (one sharp) and 2/4 time. It consists of six systems of music, each with a measure number on the left. The first system (measures 31-34) is marked with a 'D' and dynamics of *f*, *f*, *mf*, and *mp*. The second system (measures 35-38) is marked with *p* and **1**. The third system (measures 39-42) is marked with *pizz.*, *p*, *mf*, **E**, and **1**, with a 12/8 time signature. The fourth system (measures 43-45) is marked with *arco*, *f*, *arco*, *f*, *ff*, and *ff*. The fifth system (measures 46-49) is marked with **F**, *pp*, *cresc.*, *pp*, and *cresc.*. The sixth system (measures 50-53) is marked with *unis.*, *mp*, and *f*. The seventh system (measures 54-56) is marked with *pp* and *mp*. The eighth system (measures 57-60) is marked with **G**, *f*, and *p cresc. poco a poco*.

VIOLA

63

66

69 *ff* *dim.* *mf* *pp* *H*

72 *p* *p* *mf*

80 *f* *pp* *un poco cresc.*

84 *mf*

88 *f* *cresc.*

93 *ff* *pizz.* *arco* *ff* *pizz.*

98 *p* *mf* *ff* *p*

103 *mf* *L arco* *ff* *pizz.* *p*

107 *mf* *ff*

112 *pp*

VIOLA

M

119 *p* *p* *mf* *f*

123 *pp* *un poco cresc.*

126 *f*

N

130

131 *f*

O

139 *div. mf* *p* *mf* *p*

142 *p* *p* *1* *1*

146 *p* *1* *pizz. mp* *pizz. mp* *mf* *1* *1*

VIOLA

152 *arco* **P**
mp *arco* *p* *dim.* *pp*
mp *p* *dim.* *pp*

155 *mf* *p*
mf *p*

158 **Q**
p *p*

162 **1** *p* *poco cresc.*
1 *p* *poco cresc.*

166 **1 R** *mp* *f*
1 *mp* *f*

170 *f* *mf* *mp*
f *mf* *mp*

VIOLA

173

p

176

p *mf*

pizz.

181

f

arco

S 1

198

ff

192

ff

T

3

198

pp *p* *mp*

unis.

U

VIOLA

206 *mp* *mf poco a poco cresc.* *ff* V

213 non div. *fff* V

218 W V 3 3 3 3 3 3 3 3

221 X V *sempre fff* V

224 V V

227 V Y *fff* V V

231 V

236 Z V

240 V

245 Aa V V V

250 V V V 3 3 3

Detailed description: This page contains the musical score for the Viola part of Tchaikovsky's Symphony No. 6, measures 206 through 250. The score is written in B minor and 6/8 time. It features a variety of musical textures, including melodic lines, chords, and complex rhythmic patterns. Key performance instructions include *mp*, *mf poco a poco cresc.*, *ff*, *sempre fff*, and *non div.*. Rehearsal marks are labeled with letters: V, W, X, Y, Z, and Aa. Measure numbers are placed at the beginning of each staff. The score concludes with a triplet of eighth notes in measure 250.

VIOLA

255 **Bb** *fff* *pizz.* *f* *ff*

259 *arco* *fff* *pizz.* *f* *ff*

263 *arco* *fff* *pizz.* *f* *ff*

267 **Cc** *arco* *fff*

272 **Dd** *fff*

279 **Ee** *fff*

285 *Ff*

289 *Ff*

293 *Gg*

297 *Gg*

301 *sempre fff*

Detailed description: This page contains the musical score for the Viola part of Tchaikovsky's Symphony No. 6 in B Minor, Op. 74 (Pathétique), measures 255 through 301. The score is written in a grand staff (treble and bass clefs) with a key signature of one sharp (F#). The music is characterized by a driving, rhythmic pattern of eighth and sixteenth notes, often in a descending or ascending sequence. The dynamics are consistently very loud, starting with *fff* (fortississimo) and *f* (forte), and ending with *sempre fff*. Performance markings include *pizz.* (pizzicato) and *arco* (arco). The score is divided into measures by bar lines, with measure numbers 255, 259, 263, 267, 272, 279, 285, 289, 293, 297, and 301 clearly indicated. The notation includes various articulations such as accents and slurs, and dynamic hairpins.

VIOLA

Hh

306



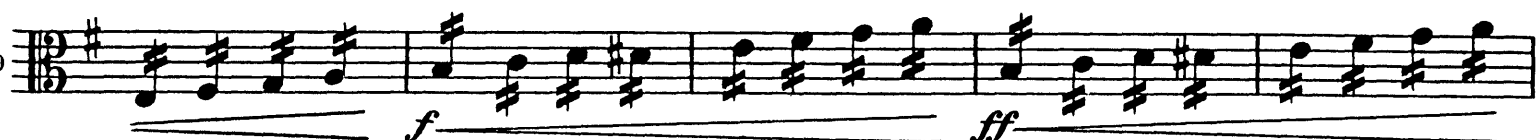
310



314



319



Kk

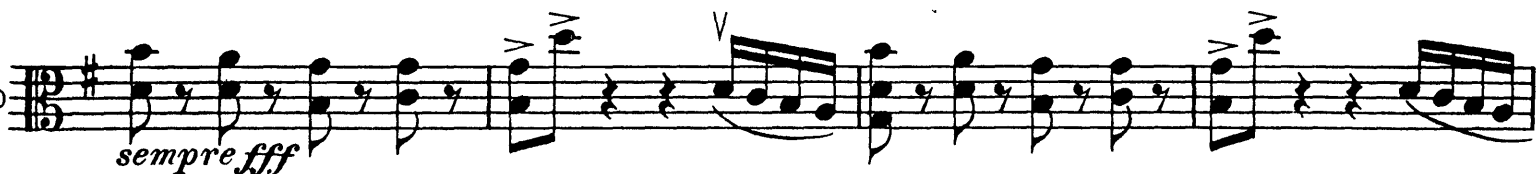
324



326



330



Ll

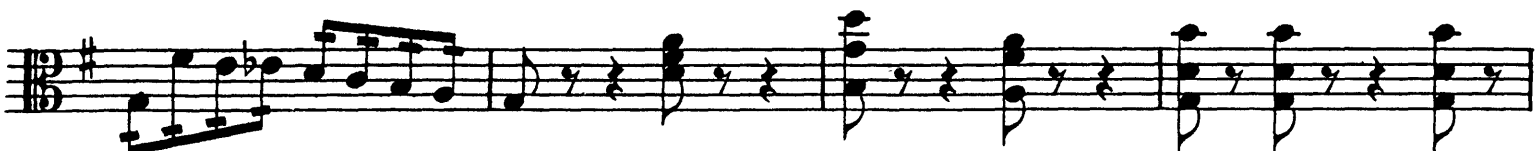
334



336



339



343



VIOLA

IV
Finale

Adagio lamentoso

f largamente *mf* *p* *f* *mf* *p*

6 *affrettando* *mp* *mf* *cresc.* *rall.* *ff*

13 *Andante* *mf* *f* *mf* *p* *pp* *ppp* *p*

20 *Adagio poco meno che prima* *f* *mf* *f* *mf* *p*

25 *pp* *pp* **B** 7

37 *Andante* *pp* *cresc.* **C** *con lenezza e devozione*

43 *poco animando* *mf* *ritenuto* **Tempo I** *p*

51 *D poco animando* *cresc.* *mf* *riten.* **Tempo I**

59 *poco animando* *div.* *cresc.* *f* *riten.* **Tempo I** *f* **E**

VIOLA

67 *animando*
cresc. *ff* *fff*
cresc. *ff* *fff*

73 *Più mosso* *stringendo*
sempre fff *stringendo*
sempre fff

78 *Vivace*
3 6

80 *unis.* *Andante*
6 7 *ff*

84 *f* *mf* *p* *p*

90 *G Andante non tanto*
ff *f* *ff* *f* *p*

96 *pp* *mf cresc.* *f* *ff* *mf*

103 *H* *V* *mf* *ff* *f* *ff*

Tchaikovsky — Symphony No. 6 in B Minor, Op. 74 (Pathétique)

VIOLA

stringendo molto

108 *mf* *cresc.*

I *Moderato assai*

114 *fff*

incalzando

ritenuto

119 *div.*

K *Andante unis.*

126 *fff*

div.

unis.

130

poco rallent. quasi adagio

134 *f* *mf* *Dämpfer*

M *Andante giusto*

con sord.

147 *Kb.* *f* *sf* *f* *sf* *sf* *sf*

N

ritenuto

155 *div.* *mf* *f* *sf* *sf*