

VIOLA

Carl Nielsen
Symphony No. 5

Tempo giusto ♩ = 100

I

7 2 4

7 8

12 16

rag.

2

pp *f* *dim.* *p*

pp *f*

3

V *f* *dim.*

4

p

5

2.

VIOLA

Viol. I

poco f molto dim. *p*

sempre p *molto dim.* *PPP*

5 *mf* *dim.* *PPP* 4 4

pizz. *f* *f sempre* *ff sempre*

ff sempre *f sempre* *cl.*

f sempre *sempre ff* *ff sempre*

ff sempre

VI. I *b_d.* *f* *dim.* *PPP* *poco a poco tranqu.*

VIOLA

16 *Tranquillo*

f 3 3 3 3 3 3 3 3

mp

V 2 3 V 4 5 6

17

18 2 3 4 5 6 7 8 9 10 11 12

mf *fz* — *mf*

fz — *mf*

19

2 3 4 5 6 7

20

molto dim. *dim.* - - -

21 5

ppp *ppp*

VIOLA

ffz fz 22 2

ffz fz 2

p cresc.

ffz

mf ffz 23 v mf fz p mfz

Tranquillo 24 1 1

p mfz pp ppp

p poco marc. 6

p poco marc. 25 12 2

rall.

Adagio non troppo

(3 Pulte) div. f molto espr.

gli altri mf

26

Detailed description: This page contains the musical score for the Viola part of the fifth movement of Nielsen's Symphony No. 5, Op. 50. The score is written in 3/4 time and covers measures 22 through 26. It features several dynamic markings: fortissimo (ffz), forte (fz), piano (p), mezzo-forte (mf), piano-pianissimo (pp), and pianissimo (ppp). Performance instructions include 'Tranquillo', 'poco marc.' (poco marcato), and 'rall.' (rallentando). The score includes various musical notations such as slurs, accents, and fingerings. Measure 22 starts with a fortissimo (ffz) dynamic and a forte (fz) dynamic. Measure 23 begins with a mezzo-forte (mf) dynamic and a fortissimo (ffz) dynamic, followed by a piano (p) dynamic and a mezzo-forte (mfz) dynamic. Measure 24 is marked 'Tranquillo' and includes piano (p), mezzo-forte (mfz), piano-pianissimo (pp), and pianissimo (ppp) dynamics. Measure 25 starts with a piano (p) dynamic and a poco marcato (poco marc.) instruction, followed by a mezzo-forte (mfz) dynamic. Measure 26 begins with a mezzo-forte (mf) dynamic and a fortissimo (f) dynamic, marked 'molto espr.' (molto espressivo). The score also includes a section for three flutes (3 Pulte) and other strings (gli altri) playing in 3/4 time, with a mezzo-forte (mf) dynamic. The page number '4' is in the top left, and the instrument name 'VIOLA' is centered at the top.

VIOLA

divisi in modo ordinario

divisi in modo ordinario
(poco pesante)

27 *rall.* *p* *a tempo* *mf* *mf*

28 *f*

29 *cresc.* *ff*

30 *fz*

dim.

pp *quasi rall.*

Detailed description: This page contains the musical score for the Viola part of the fifth movement of Nielsen's Symphony No. 5, Op. 50. The score is in 3/4 time and consists of eight staves. The first two staves are marked 'divisi in modo ordinario' and '(poco pesante)'. The third staff begins at measure 27 with a 'rall.' instruction, followed by 'a tempo' and dynamics 'p' and 'mf'. Measure 28 features a 'f' dynamic. Measure 29 includes a 'cresc.' instruction and a 'ff' dynamic. Measure 30 is marked 'fz'. The final staff concludes with a 'dim.' instruction and a 'pp' dynamic, followed by a 'quasi rall.' instruction and a fermata. Various performance markings such as 'V' and 'mf' are present throughout the score.

6

VIOLA

31 *a tempo*

mp

cresc. *mf* *dim.*

32

33 *cresc.* *f*

unis. *ff* *pp*

34 *ff* *pp*

35 *ff* *sempre ff*

simile *sempre ff*

VIOLA

1



36



37

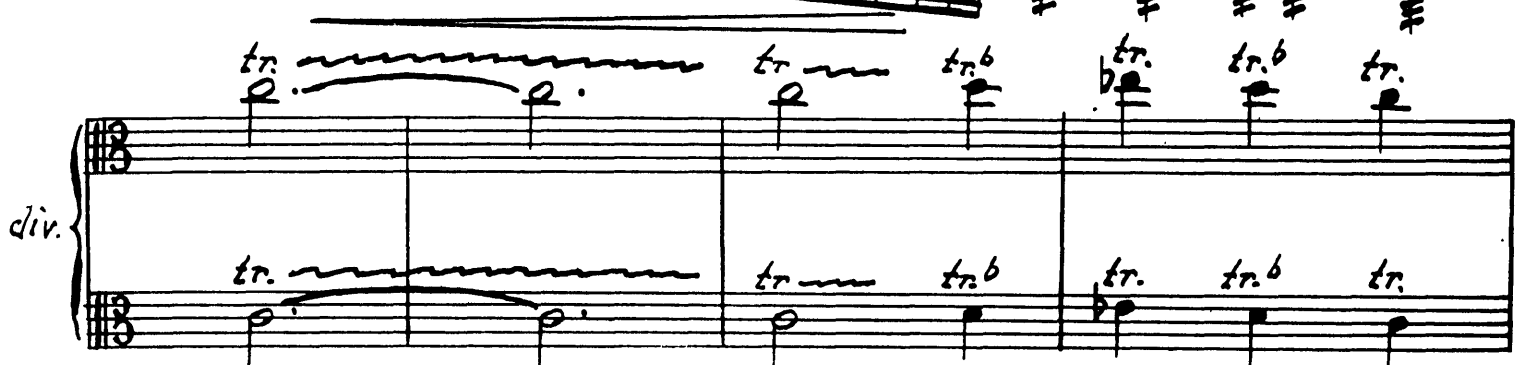


fff



tr. *tr.* *tr.b* *tr.* *tr.b* *tr.*

div.



38

unis. *dim.* *dim.*



39

Tranquillo

pp *ppp* *dim.* *pppp*



VIOLA

II

Allegro $\text{♩} = 72-76$

ossia

f

(Originale div.)

f *fz* *mf* *fz* *fz* *fz*

fp

fz *fz* *fz* *fz*

fz *fz* *fz* *fz*

40

f *ff*

41

fz

VIOLA

42

43

44

45

46

47

48

dim. *p dim.* *pp* *p*

mf *f*

p *cantabile*

f *pp*

mf *molto cresc.* *ff*

S. P.

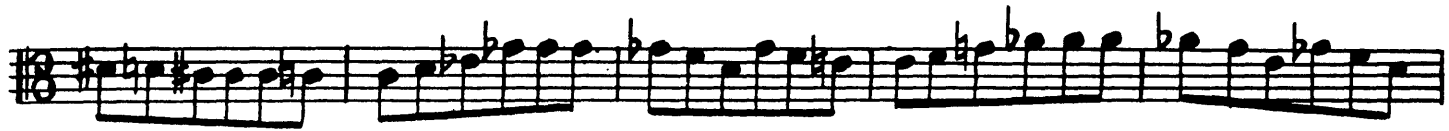
Detailed description: This page contains the musical score for the Viola part, measures 42 through 48. The score is written on ten staves. Measures 42-44 feature a complex melodic line with many accidentals and dynamic markings including *fz*, *p*, *f*, and *ff*. Measure 45 shows a dynamic shift from *dim.* to *pp* and includes a fingering '5' and a *v* marking. Measure 46 is marked *p* and *cantabile*. Measure 47 starts with *f* and ends with *pp*. Measure 48 begins with *mf* and includes a '4' marking. The final staff shows a *cresc.* leading to *molto cresc.* and *ff*, with a *S. P.* marking at the end.

VIOLA

49 *ff* *cant.* *f cant.* *cresc.* *ff fz fz fz* *ppp* *f* *dim.* *p* *dim.* *molto dim.* *sempre ppp* *ppp* *sempre spicc.* *sempre ppp* *54*

Detailed description: This page contains the musical score for the Viola part, measures 49 through 54. The music is written on a single staff in 3/4 time with a key signature of one sharp (F#). Measure 49 begins with a fortissimo (*ff*) dynamic and a *cant.* (cantabile) marking. The melody features a series of eighth notes, some beamed together, with a fermata over the final note. Measure 50 continues with *f cant.* and includes a *cresc.* (crescendo) marking. Measure 51 is marked *ff* and features a series of eighth notes with a *fz* (forzando) marking. Measure 52 starts with a *f* dynamic and a *dim.* (diminuendo) marking. Measure 53 is marked *ppp* (pianissimo) and includes a *sempre spicc.* (sempre staccato) marking. Measure 54 is marked *ppp* and continues the melodic line. The score includes various musical notations such as slurs, fermatas, and dynamic markings.

VIOLA



55



poco cresc.



56



57



cresc. poco a poco



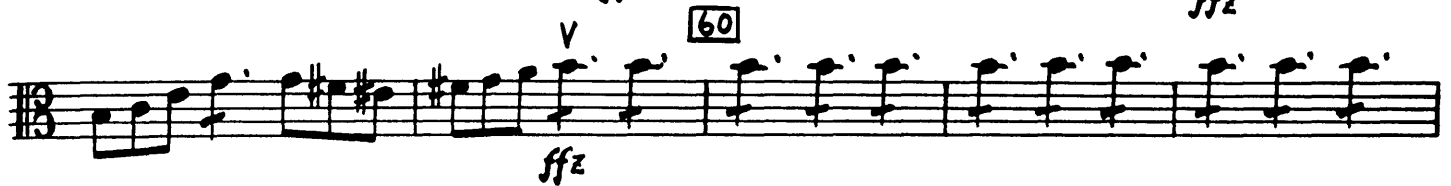
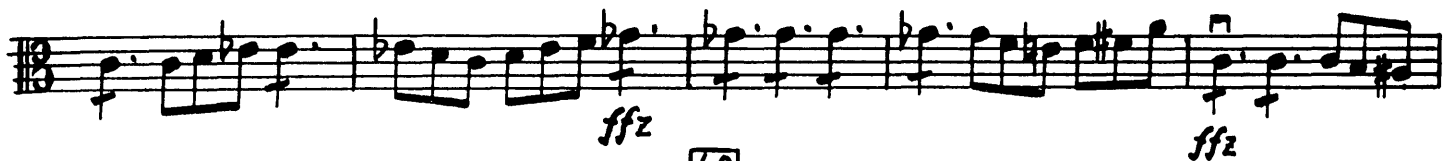
mf



58



VIOLA



VIOLA

ffz *ffz* *64 Un poco piu mosso* *mf* *mp* *65* *dim. poco a poco* *66* *sempre dim.* *pp* *(originale)* *pp* *con sord.*

The musical score for the Viola part consists of three systems of staves. The first system (measures 64-65) begins with a forte fortissimo (ffz) dynamic and a tempo marking of 'Un poco piu mosso'. The second system (measures 65-66) features a mezzo-forte (mf) dynamic and a 'dim. poco a poco' instruction. The third system (measures 66-67) includes a piano-piano (pp) dynamic and a 'sempre dim.' instruction. The score also includes performance markings such as 'con sord.' (con sordina) and various articulations like accents and slurs. Measure numbers 64, 65, and 66 are enclosed in boxes. The key signature is one sharp (F#) and the time signature is 3/8.

VIOLA

67 *con sord.*
V
pp

68

69

accell.

70

dim.

V V accell. dim.

71 *Presto* 11 VI. II 72
ppp p

10 73 11 74
mp

75

VIOLA

Musical score for Viola, measures 76-84. The score is written in 3/4 time and includes various dynamics and performance instructions.

Measures 76-79: *ppp*, *ff*, *ff*, *dim.*

Measure 77: *ppp*

Measure 78: *ff*

Measure 79: *ff*, *senza sord.*

Measure 80: *f*

Measure 81: *mf*

Measure 82: *f*

Measure 83: *mf*

Measure 84: *mf*

Additional markings: *Cl. I in B*, *10*, *11*, *V*, *mf*, *mf*, *mf*

VIOLA

85 *cresc.*

86 *f*

87 *ffz*

88 *ff* *gva* *Picc. Fl. 3*

89 *cresc.*

90 *fff*

91 *19* *5* *5* *3* *pocorall. molto rall.*

92 *Andante un poco tranquillo* *fffz* *con sord. VI. 7* *pp semplice*

93 *con sord.* *mp* *p* *mp* *espr.* *cresc.* *f*

VIOLA

94 *p*

95 *f* *mp*

96 *p*

97 *senza sord.* *ff cant.*

98 *sempre ff*

99 *Allegro (Tempo I)*

div. *tr. #* *fz* *mf* *fz* *fz* *fz* *fz* *fz* *fz* *ff*

100 *unis.* *fz* *fz*

101

102 *ff* *ff*

Detailed description: This page of a musical score for the Viola part of Nielsen's Symphony No. 5, Op. 50, contains measures 94 through 102. The score is written on a single staff in treble clef with a key signature of two flats. Measures 94-98 feature a melodic line with various dynamics: *p* (piano) at 94, *f* (forte) and *mp* (mezzo-piano) at 95, *p* at 96, and *ff cant.* (fortissimo cantabile) at 97. Measure 97 also includes the instruction *senza sord.* (without mutes). Measure 98 is marked *sempre ff*. Measures 99-102 are marked *Allegro (Tempo I)*. This section includes piano accompaniment for the right and left hands, with dynamics ranging from *ff* (fortissimo) to *mf* (mezzo-forte). The piano part features a prominent tremolo in the right hand and a steady bass line in the left hand. Measure 100 includes the instruction *unis.* (unison) for the viola. The score concludes with a *ff* (fortissimo) dynamic in measure 102.

VIOLA

Violin I (V.I.)

103 *f cant.*

cresc.

104 *ff fz fz*

105 *ff mf*

106

107 *p*

108

Detailed description: This page contains the musical score for the Viola part, measures 103 through 108. The score is written on a single staff in 3/8 time. Measure 103 begins with a dynamic marking of *f cant.* and features a melodic line with slurs and accents. Measure 104 includes a *cresc.* marking and dynamic changes to *ff*, *fz*, and *fz*. Measure 105 shows a dynamic shift to *mf*. Measures 106 and 107 consist of rhythmic patterns with slurs and accents, with a *p* marking in measure 107. Measure 108 continues the rhythmic pattern. Above the staff, there are markings for Violin I (V.I.) and Violin II (V.II) parts, including notes and slurs.

VIOLA

109

110

2

2

111

2

ff *mf* *ff*

112

ffp *mf* *sempre marc.*

113 *poco allargando*

cresc.

114

div. f 1 2 3 4 5 6 7 8 9 10 11

f

12 13 *poco a poco allarg* 14 15 16 17 18 *fff* 19 20 21 22

fff