

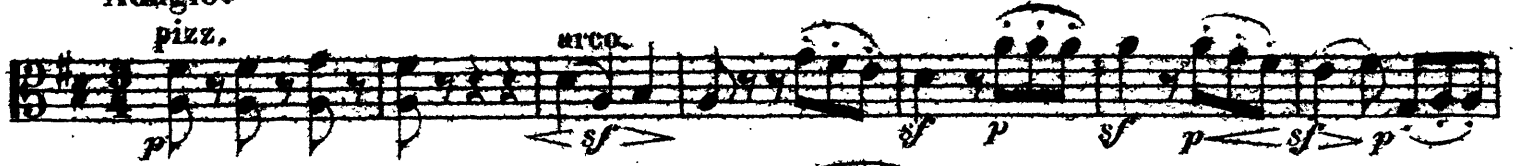
Franz Joseph Haydn Symphony No. 86

Viola.

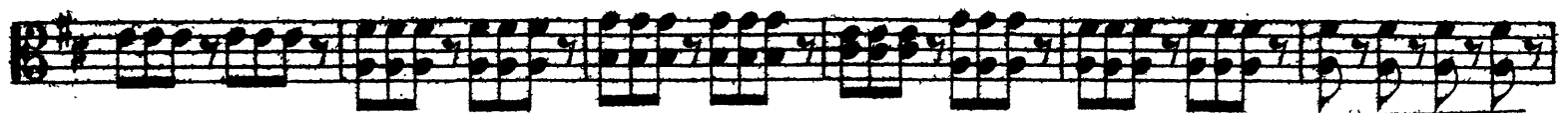
Adagio.

pizz.

arco.



Allegro spiritoso.



Viola.

p *diminu.*

diminu.

p *diminu.* *pp*

C

f

f

f

D

p *pp* *sf*

p *sf* *p*

E

p *f*

diminu.

p

Viola.

The musical score for the Viola part of Haydn's Symphony No. 86, page 3, is presented in ten staves. The key signature is one sharp (F#) and the time signature is 3/4. The score begins with a dynamic marking of *f*. The first staff contains a series of eighth notes. The second staff features a dynamic marking of *sf* and includes a slur over a group of notes. The third staff continues with eighth notes and a dynamic marking of *f*. The fourth staff is a single line of eighth notes. The fifth staff begins with a dynamic marking of *p* and includes a section marked with a large 'F' above the staff. The sixth staff features a dynamic marking of *f* and *p* and includes a slur over a group of notes. The seventh staff contains a triplet of eighth notes and a dynamic marking of *f*, followed by a section marked with a large 'G' above the staff and a dynamic marking of *p*. The eighth staff begins with a dynamic marking of *pp* and includes a section marked with 'ten.' above the staff. The ninth staff starts with a dynamic marking of *f* and includes the word 'dimin.' below the staff. The tenth staff begins with a dynamic marking of *sf* and concludes with a double bar line.

Viola.

CAPRICCIO.

Largo.

The musical score for the Viola part of Haydn's Symphony No. 86, Capriccio, is presented in 12 staves. The key signature is G major (one sharp) and the time signature is 3/4. The tempo is marked 'Largo'. The score begins with a dynamic of *p*. The first staff contains a melodic line with a *p* dynamic. The second staff features a more rhythmic passage with *sf* and *p* dynamics, marked with a 'V' and 'H'. The third staff continues with *p* dynamics and includes a 'V' marking. The fourth staff shows a dynamic shift to *sf* and *pp*, with a '1' marking above the staff and an 'I' marking below. The fifth staff has *sf* and *p* dynamics. The sixth staff starts with a 'K' marking and includes *f*, *p*, and *pp* dynamics. The seventh staff begins with a 'cresc.' marking and features *f*, *D*, and *sf* dynamics. The eighth staff has *p* dynamics and includes a 'V' marking. The ninth staff, marked with an 'M', contains *f* and *p* dynamics. The tenth staff, marked with an 'N', includes *f*, *p*, *dimin. pp*, and *mf* dynamics, with a 'V' marking. The final staff, marked with an 'O', concludes with *dimin.* dynamics.

Viola.

First staff of music, starting with a forte (*f*) dynamic and a piano (*p*) dynamic marking.

Second staff of music, featuring piano (*p*), *dimin.*, *pp*, and *f* dynamics.

MENUETTO.
Allegretto.

Third staff of music, beginning the Minuet section.

Fourth staff of music, featuring a piano (*p*) dynamic marking.

Fifth staff of music, featuring *dimin.*, *pp*, and *cresc.* dynamics.

Sixth staff of music, featuring a piano (*p*) dynamic marking.

Seventh staff of music, featuring a *dimin.* dynamic marking.

Eighth staff of music, featuring a piano (*p*) dynamic marking and a *V* (Vibrato) marking.

Ninth staff of music, featuring a *D* (Dolce) dynamic marking.

Trio. *pizz.*

Tenth staff of music, featuring a piano (*p*) dynamic marking.

Eleventh staff of music, featuring a *pp* dynamic marking.

Twelfth staff of music, featuring a piano (*p*) dynamic marking and a *2* (second ending) marking.

Thirteenth staff of music, featuring *dimin.*, *p*, and *pp* dynamics.

FINALE.

Allegro con spirito.

Viola.

Viol. I.

p

cresc. sempre

P

dimin. **f**

R **1**

a tempo. **sf** *ritard.* **ff** *ritard.*

S *p.*

f **p**

Viola.

The musical score for the Viola part of Haydn's Symphony No. 86, page 7, is presented in 13 staves. The key signature is G major (one sharp) and the time signature is 3/4. The score includes various musical notations and performance markings:

- Staff 1:** Starts with a dynamic marking of *p* (piano). A marking **T** is placed above the staff.
- Staff 2:** Continues the melodic line.
- Staff 3:** Features a marking **U** above the staff, which appears to be a correction or a specific performance instruction.
- Staff 4:** Continues the melodic line.
- Staff 5:** Includes a marking **V 5** above the staff.
- Staff 6:** Includes a marking **W** above the staff.
- Staff 7:** Continues the melodic line.
- Staff 8:** Includes a marking **X** above the staff.
- Staff 9:** Includes a marking **V** above the staff.
- Staff 10:** Includes a marking **Y** above the staff.
- Staff 11:** Continues the melodic line.
- Staff 12:** Continues the melodic line.
- Staff 13:** Ends with a double bar line.