

Viola

Johann Sebastian Bach
Orchestral Suite No. 1
In C Major, BWV 1066

Ouverture

6

11

17

22

26

33

37

40

44

48

52

Ob. I

tr

1. 2.

2

3

3

2

Ob. I

Viola

Musical score for Viola, measures 58-109. The score is written in treble clef with a key signature of one sharp (F#) and a 3/4 time signature. It features various musical notations including slurs, trills, and dynamic markings. Measure numbers 58, 64, 72, 76, 82, 85, 88, 92, 95, 99, and 104 are indicated at the start of their respective staves. The piece concludes with first and second endings at measure 109.

Courante

Musical score for Courante, measures 7-10. The score is written in treble clef with a key signature of one sharp (F#) and a 3/4 time signature. It features various musical notations including slurs, trills, and dynamic markings. Measure numbers 7 and 10 are indicated at the start of their respective staves.

Viola

15

22

Gavotte I
alternativement

7

15

Gavotte II

8

16

Gavotte I da capo

Forlane

4

8

12

16

20

4

Menuet I
alternativement

Viola



12



Menuet II



13



Bourrée I
alternativement

Menuet I da capo



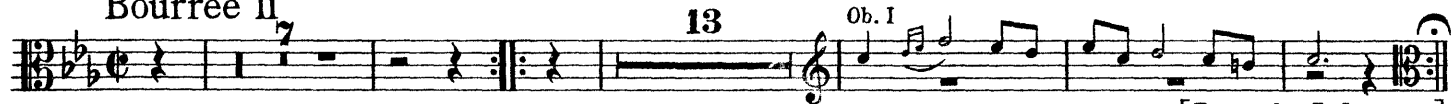
8



16



Bourrée II



13

Ob. I

[Bourrée I da capo]

Passepied I



14



[Fine]

Passepied II



7



15



22



Passepied I da capo