

Arnold Schoenberg Chamber Symphony No. 1 Op. 9

VIOLONCELLO

1 Langsam (♩) **1** Sehr rasch

f *p* *ff*

hervortretend **2** *ff* *sehr deutlich* *ff*

sf *sf* *sf*

3 Sehr schwungvoll *ff* *mf* *p*

4 *ff*

5 *mf* *ff* *f* *ff* *f* *ff* *f* *ff* *f*

Pesante *G-Saite*

6 Tempo **7** *ff*

8 *pp*

9 *mf* *espress* *f* **10** *f*

1

VIOLONCELLO

11 Pesante
p — *mf* — *ff*

12 *fff*

13 I. Zeitmaß

14 Pesante *p*

15

sehr zurückhaltend **16** Zeitmaß, schwungvoll
ff sf fp ffp pp

17 *p*

18 viel langsamer *pizz pp*

19 Bogen *P(leicht)* Zeitmaß

20 *mf f ff ff mp p* *sehr zurückhaltend*

21 Viel langsamer als das I. Zeitmaß
p pp

22 *pp*

23 *p pp*

24 *p f fp*

VIOLONCELLO

25 pizz *p* *ff*

26 *zurückhaltend arco* *ff hervortretend* *f espress*

27 Fließend, Tempo *f* *mf* pizz

28 *hervortretend arco* *f*

29 *ff*

30 *f* *p*

31 *f espress* *ff*

32 Feurig *ff* *ff* *ff*

33 Tempo I *ff* *sf*

34 Etwas ruhiger *p* *pp*

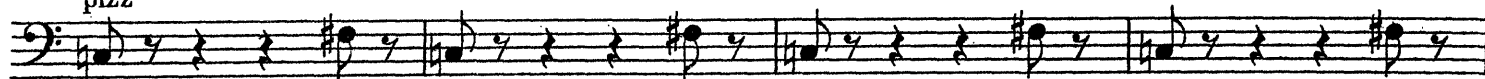
35 noch ruhiger *4*

VIOLONCELLO

36

steigernd und beschleunigend

pizz



37

arco



38

Sehr rasch



39



40

pizz



41

arco

pp



42



43

pizz

arco



steigernd und beschleunigend

44



45



46

Sehr rasch (Presto alle breve) d = d



47

pizz

pizz

col legno



VOLONCELLO

48 Langsamer
pizz

49 (pizz)

Nach und nach wieder schneller
p cresc

50 Steigernd, wieder sehr rasch.
arco pp

51 cresc.

52 col. legno p

53 p

54 Pesante Bogen Sehr heftig p

55 ff hervortreten

56 pp **57** 1 1

VIOLONCELLO

58

pp pp p cresc

59

ff ff

60 Viel langsamer, aber doch fließend

pp rit. ff sehr ausdrucksvoll

61

p

62 **63**

f ff

64 Nach und nach in das Anfangszeitmaß

pp

65

mf espress.

66

cresc f ff

67 Sehr rasche

rit p

68

f

68

sf mf

VIOLONCELLO

69 *f* *ff* *ff* *fp* *ff* *fp* *ff*

70 *rit* *ff* *pp* *tempo* *hervortretend* *ff*

espress (pp) *hervortretend* *mf*

72 *pp* *espress (pp)*

73 *pp sehr ausdrucksvoll*

74 *mf* *f* *fff sehr*

hervortretend

76 *fff* *rit* **77** *Viel langsamer* *Mit Dämpfer* *1* *Flag.*

78 *Sehr langsam* *1* *2* *fp* *pp col legno*

VIOLONCELLO

79 Fließender *Bogen* **80** Noch etwas fließender

p *p ausdrucksvoll*

81 *p* *mf* **1**

82 *sehr ausdrucksvoll* *mf* *3*

etwas zurückhaltend, steigernd **83** *f* *p espress., zart* *cresc.* *ff*

steigernd *p* *pcresc.* *f* *p*

84 *pizz* *p* *pp* **6**

85 *Bogen* *Dämpfer weg* **86** Etwas bewegter (fließender) *V*

1 *sf* *pp (sehr weich)* *2* *pp ohne Dämpfer*

87 hervortretend *f* *ff* **88** hervortretend *ff* *V*

ff *V* *p* *ff*

VIOLONCELLO

89 hervortretend
f *p espress*

pp *sehr zurückhaltend*

90 Schwungvoll (Anfangszeitmaß)

p *pp*

91 ruhiger *steigernd*

f

92 sehr zurückhaltend *Wieder im Zeitmaß*

ff *sf* *mf hervortretend*

93

steigernd

mf cresc. *f cresc.*

94

ff *pizz*

Bogen

95

ff *pizz*

96 *rit*

I Tempo

arco *1*

VIOLONCELLO

97 *ff* *ff* 3 3 3

98 *fp* *p* *fff* 3 3 3 3 3

99 *p* *rit* 3

100 *hervortretend* *ff* *pp* *pp* *ppp* 101

espress *ruhiger* 3 3 3 3

102 *pizz* *pp* *pp*

103 *ruhiger* *(pizz)* *pp* 3 3 3 3

104 *Tempo* *pp* 3 3 3 3

Bogen *pp* *sf* 1

Detailed description: This page contains the cello part for measures 97 through 104 of Schoenberg's Chamber Symphony, Op. 9. The music is written in a single staff with a bass clef and a key signature of two sharps (F# and C#). The tempo is 3/4. Measure 97 begins with a forte (*ff*) dynamic and features a series of eighth-note triplets. Measure 98 continues with triplets, showing dynamic fluctuations from *fp* to *fff*. Measure 99 is marked *p* and includes a *rit* (ritardando) marking. Measure 100 is marked *hervortretend* and features a dynamic range from *ff* to *ppp*. Measure 101 continues with a *ppp* dynamic. Measure 102 is marked *pizz* (pizzicato) and *pp*. Measure 103 is marked *ruhiger* (quieter) and *(pizz)*. Measure 104 is marked *Tempo* and *pp*. The final measure of the page (measure 104) includes the instruction *Bogen* (arco) and a dynamic shift from *pp* to *sf* (sforzando), followed by a first ending bracket labeled '1'.

VIOLONCELLO

105 *p* *f*

106 *fp* *pp* *p* *p* *pizz* *Bogen* *pp*

108 *p cresc.* *cresc.*

109 *ff* *ff hervortretends*

110 *pp* *f*

111 *pp* *f*

112

113 *ff* *ff*

114 *rit* *Sehr rasch* *ff*

115 *ff*

116 *ff* *fff*

Detailed description: This page contains the cello part for measures 105 through 116 of Schoenberg's Chamber Symphony, Op. 9. The music is written in a single staff with a bass clef and a key signature of two sharps (D major). Measure 105 begins with a piano (*p*) dynamic and features a series of triplet eighth notes that gradually increase in volume to a forte (*f*) dynamic. Measure 106 starts with a fortissimo-piano (*fp*) dynamic, includes a *pizzicato* (*pizz*) section, and then returns to a bow (*Bogen*) with a pianissimo (*pp*) dynamic. Measure 108 shows a crescendo from piano (*p*) to a louder dynamic. Measure 109 is marked fortissimo (*ff*) and includes the instruction *ff hervortretends*. Measure 110 starts with a pianissimo (*pp*) dynamic and builds to a forte (*f*) dynamic. Measure 111 begins with a pianissimo (*pp*) dynamic and ends with a forte (*f*) dynamic. Measure 112 continues the forte dynamic. Measure 113 is marked fortissimo (*ff*) and features a crescendo. Measure 114 is marked *rit* (ritardando) and then *Sehr rasch* (very fast), with a fortissimo (*ff*) dynamic. Measure 115 is marked fortissimo (*ff*) and features triplet eighth notes. Measure 116 is marked fortissimo (*ff*) and ends with a fortississimo (*fff*) dynamic.