

Camille Saint-Saens  
Carnival of the Animals

VIOLONCELLE

Introduction

N° 1 et Marche Royale du Lion

Andante maestoso  
1<sup>er</sup> Piano 8<sup>ve</sup> velle

*p* *cresc.*

*Piano* *ff*

*ff*

*1<sup>er</sup> Piano* *pizz.*

*1<sup>er</sup> Piano* *ff*

*f* *ff*

*ff*

*ff* C.B.

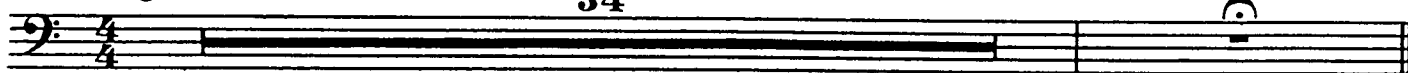
VIOLONCELLE

N° 2

Poules et Coqs

Allegro Moderato

34



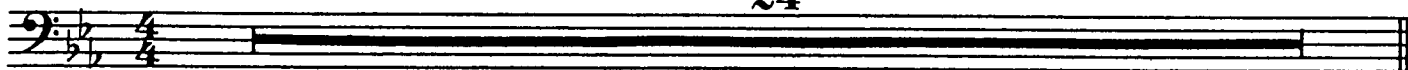
N° 3

Hémiones

(Animaux véloces)

Presto furioso

24



N° 4

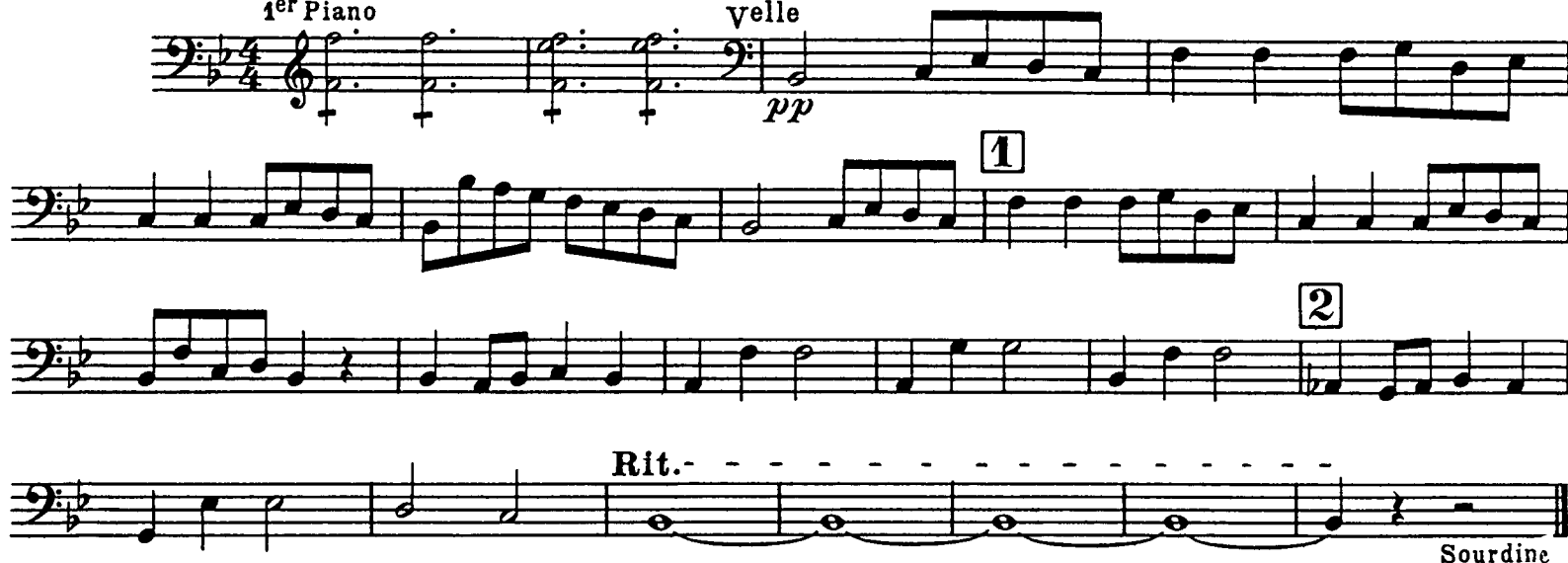
Tortues

Andante maestoso

1<sup>er</sup> Piano

velle

pp

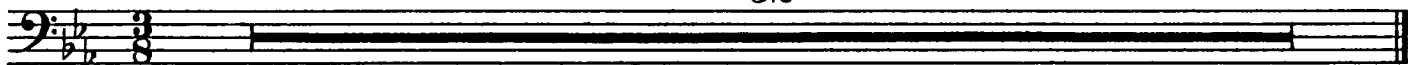


N° 5

L'Elephant

Allegretto pomposo

52



N° 6

Kangourous

Moderato



N° 7

Aquarium

Andantino

p

Sourdine



Musical score for the beginning of 'Personnages à longues oreilles'. It consists of four staves of music in bass clef. The first staff has a first ending bracket labeled '1'. The second staff has a second ending bracket labeled '2'. The third staff has a third ending bracket labeled '3', a 'pizz.' instruction, and a fourth ending bracket labeled '4'. The fourth staff is marked 'arco' and features a rhythmic pattern of eighth notes, followed by a double bar line and a final ending bracket labeled '2'. Below the fourth staff, the instruction 'ôtez la Sourdine' is written.

N° 8 Personnages à longues oreilles

Tempo ad lib.

24

Musical score for the beginning of 'Le Coucou au fond des bois'. It consists of a single staff in bass clef with a 3/4 time signature. The first measure contains a whole note chord, followed by a double bar line and two more measures, each containing a whole note chord.

N° 9 Le Coucou au fond des bois

Andante

42

Musical score for the beginning of 'Volière'. It consists of a single staff in bass clef with a 3/4 time signature and a key signature of one flat. The first measure contains a whole note chord, followed by a double bar line and two more measures, each containing a whole note chord.

N° 10 Volière

Moderato grazioso

pizz.

*p*

Musical score for the beginning of 'Volière'. It consists of four staves of music in bass clef with a 3/4 time signature and a key signature of one flat. The first staff has a first ending bracket labeled '1' and a second ending bracket labeled '2'. The second staff has a first ending bracket labeled '1' and a third ending bracket labeled '3'. The third staff is marked 'arco' and has a fourth ending bracket labeled '4'. Below the third staff, the instruction 'pp sul ponticello' is written. The fourth staff is marked 'pizz.' and has a 'pp' dynamic marking at the end.

VIOLONCELLE

N° 11

Pianistes

Allegro moderato

3 Piano *arco* *velle* **1** 3

Piano *velle* **2** 3 Piano

*velle* **3** 3 Piano *velle* **4** Piano

*velle*

N° 12

Fossiles

Allegro ridicolo

*ff* pizz.

*arco* **1** pizz.

*arco*

pizz. *p* *arco*

**2** 4 *p*

**3** pizz. *ff*

arco pizz.

4 arco

5 velle pizz. p

4 Clar. 2

arco 1 6 ff

This section of the score is written for the cello in bass clef with a key signature of one flat. It begins with an *arco* instruction and a rhythmic pattern of eighth notes. A first ending bracket labeled '4' covers the first two measures. The piece then transitions to *pizz.* (pizzicato) with a dynamic of *p*. A second ending bracket labeled '2' covers the final two measures. A clarinet part is also shown, starting with a *4* measure rest. A third ending bracket labeled '6' covers the final six measures, which end with a *ff* dynamic. The section concludes with a double bar line.

N° 13

Le Cygne

Andantino grazioso  
Piano

velle

p

1

2

3

Rit. Lento a Tempo rit.

dim. pp 1

This section is for the cello in treble clef with a key signature of one sharp and a 6/4 time signature. It begins with a *Piano* dynamic and a melodic line of eighth notes. A first ending bracket labeled '1' covers the first four measures. The piece continues with a melodic line, with a second ending bracket labeled '2' covering the next four measures. A third ending bracket labeled '3' covers the final four measures, which end with a *mf* dynamic. The tempo markings *Rit. Lento*, *a Tempo*, and *rit.* are placed above the final measures. The section concludes with a *dim.* dynamic and a first ending bracket labeled '1'.

VIOLONCELLE

Nº 14

Final

Molto allegro

Piano

**VIOLONCELLE**

**6**  
arco  
*f* *>* *>* *>* *>* *sim.*

**7** von  
Velle Piano

Velle  
*p*

**8**  
*cresc.*

**9**  
*f*

**10**

*ff*