





CELLO



CELLO

5 ARCO

1 2 3 4 5 6 7 8 1 2 3 4 5 6 7 8

*pp*

1 2 3 4 5 6 7 8 1 2 3 4 5 6 7 8

*cresc. a poco a poco*

1 2 3 4 5 6 7 8 1 2 3 4 5 6 7 8

*f*

6

*ff*

*p*

*ff* *p*

7

PIZZ

*p*

*p*

ARCO

*p*

*f* *sf* *p*

CELLO

First measure of the cello part, starting with a slur over two notes and a first ending bracket. The dynamic is *p*.

Second measure of the cello part.

Third measure of the cello part, marked with a box containing the number 8. The dynamic is *cresc.* leading to *ff*.

Fourth measure of the cello part, featuring a complex rhythmic pattern.

Fifth measure of the cello part, continuing the complex rhythmic pattern.

Sixth measure of the cello part, continuing the complex rhythmic pattern.

Seventh measure of the cello part, marked with a box containing the number 9. The dynamic is *f* leading to *smorz.*

Eighth measure of the cello part, marked with *p* and *PIZZ.*

Ninth measure of the cello part, marked with *ARCO* and *p*.

Tenth measure of the cello part, marked with *PIZZ.*

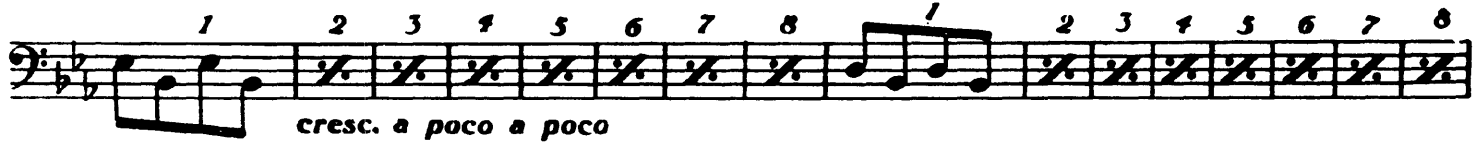
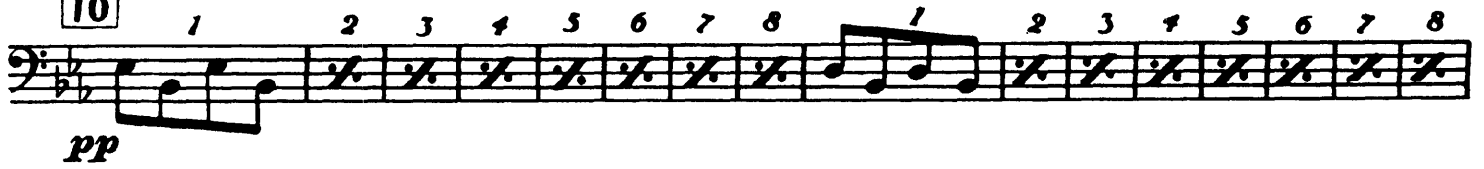
Eleventh measure of the cello part, marked with *ARCO*.

Twelfth measure of the cello part, marked with *PIZZ.*

CELLO



10 ARCO



11



12

