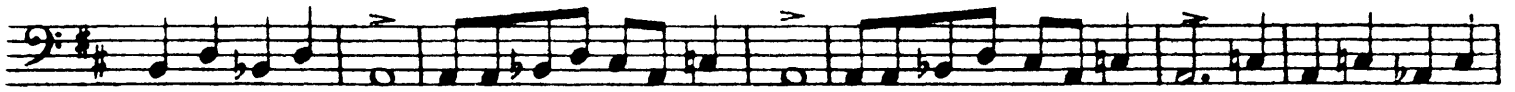


Alexander Borodin  
Symphony No. 2 in B Minor

**VIOLONCELLO.**

**Allegro.**



**VIOLONCELLO.**

*Poco meno mosso.*

*rit. dolce*

*p*

*mf*

*cresc. poco accel.*

*ff marcato cresc.*

*7 pesante*

*mf f dim. pdim.*

*5 p E Poco meno mosso.*

*1 p*

**VIOLONCELLO.**

**F** *Animato assai.* **2**

*p* *f* *p* *cresc.*

*f* *G* *f*

*f* *pizz.* *p* *arco* *mf*

*Animato assai.* *ff* *f dim* *p* **H**

*f*

*ff* *p*

**VIOLONCELLO.**

3 3 3 3 3  
*ff* *rall.*

**Allegro. (Tempo I.)**  
*ff*

*fz* *mf*

*fz poco rit* 1

**Poco meno mosso.** *ff*  
*p pizz.* *mf* *mf* *pp* *arco* *M*

*p*

*p* *f* *f cresc.*

**Animato assai.**  
*ff* *poco a poco piu animato* *fp* *cresc.*

*mf* *cresc.* *f* *ff*

0 1 2 3 4 5 6 7

8 9 10 *poco a poco allarg e pesante* *a tempo*  
*ff*

II.

SCHERZO.

Prestissimo.  
pizz.

VIOLONCELLO.

dim.

The first system of the cello part consists of two staves. The upper staff begins with a dynamic marking of *mf* and a triplet of eighth notes. The lower staff starts with a *pizz.* marking. The system concludes with a *f* dynamic and a first ending bracket.

The second system continues the cello part with two staves. It features a *mf* dynamic, a triplet of eighth notes, and a *cresc.* marking.

The third system of the cello part is marked with *f* and *mf*. It includes a first ending bracket, a section labeled 'A' with a 5-measure rest, and a *pizz.* marking.

The fourth system of the cello part features *mf* and *f* dynamics. It includes *arco* markings, a *pizz.* marking, and the instruction *f appass. e energico*.

The fifth system of the cello part is marked with *mf* and *ff*. It includes a triplet of eighth notes and a section labeled 'B'.

The sixth system of the cello part includes a section labeled 'C' with a 3-measure rest, a *ppizz.* marking, and a *cresc.* marking.

The seventh system of the cello part features *f* and *mf* dynamics. It includes first and third ending brackets.

VIOLONCELLO.

*p* *cresc.* *f* 1

*mf* *arco* *mf*

*f*

*cresc.* *f*

*E poco cresc.* *poco cresc.*

*Allegretto.* *p*  
*dim.* *pp* 4 *pdim.* *pprall.* 2 13

*cresc.* *dim.* *mf pizz* *p* *f*

*p* *arco* *cresc.* *p*

Borodin — Symphony No. 2 in B Minor

VOLONCELLO.

3 *mf*

*cresc.* *dim.* *mf* *pizz.* *p*

*p*

Tempo I. *pizz.* 3 *mf* *p* *cresc.*

1 3 *f* *mf* *mf* *cresc.*

1 H 5 *arco* 3 *f*

*pizz.* *f* *mf* *arco* 2 *pizz.* 3 1 *p*

*f* *appass'e energico*

*f*

K 3 *pizz.* *cresc.* *f* 1

Borodin — Symphony No. 2 in B Minor

The Orchestra Musician's  
CD-ROM LIBRARY™

V I O L O N C E L L O .

3 dim. cresc.

mf p

Violoncello staff 1: Bass clef, key signature of two flats. Features a triplet of eighth notes followed by a dynamic change from *mf* to *p*, and a *dim.* followed by *cresc.* marking.

1 L arco mf

Violoncello staff 2: Bass clef, key signature of two flats. Features a first ending bracket, a *L arco* marking, and a dynamic change from *f* to *mf*.

Violoncello staff 3: Bass clef, key signature of two flats. Features a *cresc.* marking at the end of the staff.

ff p cresc.

Violoncello staff 4: Bass clef, key signature of two flats. Features a *ff* dynamic marking and a *p cresc.* marking.

dim. p poco cresc. dim.

Violoncello staff 5: Bass clef, key signature of two flats. Features *dim.*, *p poco cresc.*, and *dim.* markings.

sempre piu animato. mf

Violoncello staff 6: Bass clef, key signature of two flats. Features the instruction *sempre piu animato.* and a *mf* dynamic marking.

p

Violoncello staff 7: Bass clef, key signature of two flats. Features a *p* dynamic marking.

cresc. ff

Violoncello staff 8: Bass clef, key signature of two flats. Features a *cresc.* marking and a *ff* dynamic marking.

N 3 pizz. arco p

Violoncello staff 9: Bass clef, key signature of two flats. Features a *N* marking, a triplet, a *pizz.* marking, a *arco* marking, and a *p* dynamic marking.

01 p dim. ppp

Violoncello staff 10: Bass clef, key signature of two flats. Features a *01* marking, a *p dim.* marking, and a *ppp* dynamic marking.



III.

VIOLONCELLO.

Andante.

4 *pp* *ppp* 2

2 2 2 B 1 1 C *pesante* *f* *Poco animato.* 5

*pesante* D *mf* *p*

E *mf* *f* *dim.*

F *f* *p* *Poco piu animato.*

*p* *p* G

*mf pesante cresc* *f* G 7

**VIOLONCELLO.**

First system of the Violoncello part. The top staff is a single bass clef staff with dynamics *f*, *p*, and *cresc*. The bottom part is a grand staff with dynamics *H*, *II*, and *III*.

**Tempo I. ma piu animato.**

Second system of the Violoncello part. The top staff is a single bass clef staff with dynamics *dim.*, *poco rit.*, *poco meno mosso.*, and *cantabile.* There are also markings for *1*, *2*, and *K*.

Third system of the Violoncello part. The top staff is a single bass clef staff with dynamics *mf* and *f*.

Fourth system of the Violoncello part. The bottom part is a grand staff with dynamics *dim.* and *p*.

Fifth system of the Violoncello part. The bottom part is a grand staff with dynamics *p* and *mf*.

**N Poco piu animato.**

**O Tempo I.**

Sixth system of the Violoncello part. The bottom part is a grand staff with dynamics *p*, *mf*, *f*, *p*, *pp*, and *allarco*.

IV.

FINALE.

VIOLONCELLO.

Allegro.

The musical score for the Violoncello part is written on ten staves. It begins with a treble clef, a key signature of two sharps (F# and C#), and a 2/4 time signature. The tempo is marked 'Allegro'. The first staff starts with a dynamic marking of *p* (piano) and a *poco cresc.* (poco crescendo) instruction. The second staff features a *cresc.* instruction and dynamic markings of *fz* (forzando) and *f* (forte). The third staff includes a *f* marking and a section labeled 'A'. The fourth staff continues the melodic line. The fifth staff shows a *pp* (pianissimo) marking. The sixth staff has a section labeled 'B' and a *ff* (fortissimo) marking. The seventh staff begins with a *p* marking. The eighth staff has a *cresc.* instruction and a section labeled 'C'. The ninth staff starts with a *p* marking. The score concludes with a final *p* marking.

Borodin — Symphony No. 2 in B Minor

The Orchestra Musician's  
CD-ROM LIBRARY™

VIOLO NCELLO.

*pizz.*  
*ff*  
*poco allarg.*

*a tempo*  
*arco*  
*mf*  
*arco*  
*cresc.*  
*f*  
*p*

*mp*

*f*  
*rall.*  
**2** **E** **Lento. Allegro.** **1** **Lento. Allegro.** **1**  
*rall.* **2** **1** *rall.* **2** **1** *rall.*

*a tempo*  
*p*

*cresc.*

*ff*

*ff*  
*p*  
*cresc.*  
*marcato*

*f*  
*ff pesante*  
*cresc.*

Borodin — Symphony No. 2 in B Minor  
VIOLONCELLO.

simile  
*fz f*

*fz ff* *allarg.* *tempo* *f*

*ff*

*f p*

*poco cresc.* *cresc.*

*f*

*tr* *2* *f*

*3* *p*

*pp* *pp spiccato* *3*

**K** *mf*

VIOLONCELLO.

*tranquillo*  
**L** 3 *p* 2 2

**M**arco  
*p pizz.* *mf*

*f* *ff arco* *din.*

*allarg.* *ff poco a poco piu animato a tempo*

**N** Animato  
*ff*

**O** Tempo I.  
*fz p* *cresc. poco a poco piu animato*

*cresc. molto* *Vivo.* *f*

*ff* *fz* **Fine.**