

Ludwig van Beethoven

Wellington's Victory or the Battle of Vittoria, Op. 91

Violoncello e Basso.

ERSTE ABTHEILUNG.

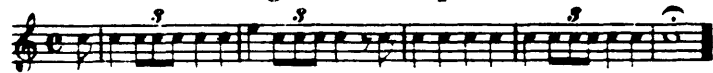
Schlacht.

Trommeln und Trompeten an der englischen Seite.

Englische Trommeln zuerst allein.



Dann treten dazu englische Trompeten in Es.



Marcia: Rule Britannia.

22

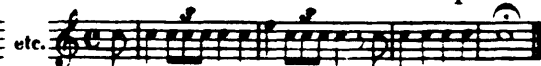


Trommeln und Trompeten an der französischen Seite.

Französische Trommeln zuerst allein.



Dann treten dazu französische Trompeten in C



Marcia: Marlborough.

20

A



Tromba in C an der französischen Seite.



Trombā in Es an der englischen Seite.



Beethoven — Wellington's Victory

Orchestra Musician's
CD-ROM LIBRARY

Violoncello e Basso.

Schlacht.

Allegro.

The first section of the score is marked *Allegro*. It consists of three staves of music. The first staff begins with a forte (*ff*) dynamic and features a melodic line with eighth notes and quarter notes. The second and third staves provide harmonic support with chords and bass lines. A section marker 'B' is placed above the second staff.

Meno Allegro.

The second section is marked *Meno Allegro*. It consists of five staves of music. The first staff features a complex rhythmic pattern with many beamed eighth notes. The following staves continue this pattern with various dynamics, including *ff*. A section marker 'C' is placed above the fourth staff.

Vol.

The third section is marked *Vol.* (Vivace). It consists of two staves of music. The first staff has a melodic line with slurs and accents, while the second staff provides a bass line. A section marker 'D' is placed above the second staff.

C.B.

The fourth section consists of two staves of music. The first staff features a melodic line with slurs and accents, while the second staff provides a bass line. A section marker 'D' is placed above the second staff.

Violoncello e Basso.

unis.

V

This section contains three staves of music. The first two staves are for the Violoncello and the third is for the Bass. The music is in a key with two flats and a 3/4 time signature. It features a rhythmic pattern of eighth and sixteenth notes. A 'unis.' marking is present at the beginning of the second staff, and a 'V' marking is above the first measure of the second staff.

Sturm-Marsch.

Allegro assai.

ff sf sf

1 2 3 4 5 6 7 8 9 10 11

12 1 2 3 4 5 6 7 8 E 1

2 3 4 5 6 7 8

This section contains three staves of music. The first staff is marked 'Allegro assai.' and 'ff'. It features a rhythmic pattern of eighth notes. The second staff is marked 'sf' and 'sf'. It features a rhythmic pattern of eighth notes. The third staff is marked 'sf' and 'sf'. It features a rhythmic pattern of eighth notes. There are measure numbers 1 through 11 on the first staff, 12 through 1 on the second staff, and 2 through 8 on the third staff. A key signature change to one flat is indicated by 'E' at the end of the second staff.

Sempre più Allegro.

Presto.

ff

F.

This section contains four staves of music. The first staff is marked 'Presto.' and 'ff'. It features a rhythmic pattern of eighth notes. The second staff is marked 'F.'. It features a rhythmic pattern of eighth notes. The third staff is marked 'ff'. It features a rhythmic pattern of eighth notes. The fourth staff is marked 'ff'. It features a rhythmic pattern of eighth notes. There are measure numbers 1 through 10 on the first staff.

Beethoven — Wellington's Victory

Orchestra Musician's
CD-ROM LIBRARY

Violoncello e Basso.

più f *f* *f* *f* *f* *f* *ff*
f *f* *f* *f* *f* *f* *fff*
f *f* *f* *f* *f* *fff*
 1 2 3 4 5 6 7 8 9 10
 11 12 13 14 15 16 *H*
f *f* *dim.*
p *sempre più p*

Andante.

pp *p*
Vel.
C.B. *pp* 6 6 6
f *p* *f* *p* *f* *p*
f *p* *f* *p* *f* *p*
p *f* *p* *pp* *pizz.*
p *f* *p* *pp* *pizz.*

Violoncello e Basso.

ZWEITE ABTHEILUNG.

Sieges-Symphonie.

Intrada.

Allegro, ma non troppo.



Allegro con brio.



Andante grazioso.

pizz.



Beethoven — Wellington's Victory

Orchestra Musician's
CD-ROM LIBRARY

Violoncello e Basso.

arco

ff

L

M

Tempo di Menuetto moderato.

1

ff

1

ff

1

ff

1

ff

2 Violoncelli

N 8 2

Allegro.

ritard.

20

Vel.

0

C.B.

pizz.

p

Violoncello e Basso.

pizz. **Tutti.** arco 1 2 3
pp *cresc. poco a poco*
arco *pp* *cresc. poco a poco*

4 5 6 7 8 9 10 11

unis. *f* *ff* *P*

f *f* *f* *f* *f* *f* *f* *f*

ff *ff* *ff* *ff* *ff* *ff* *ff* *ff*

Violonc. Bassi. *p cresc.* *p cresc.* *f*

R 1 5

Violonc. *pizz.* 1 2 3 4 5 6 7 8 9
p Bassi *pizz. cresc. poco a poco*

10 11 **S** arco 1 1 1 1 1 1

ff

1 1 1 1 1 1