

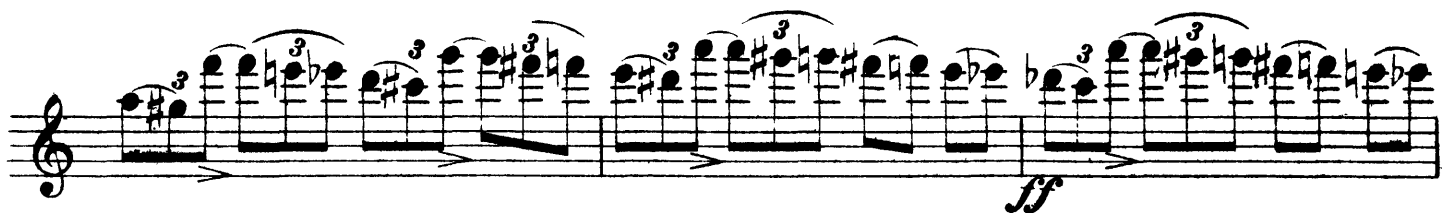
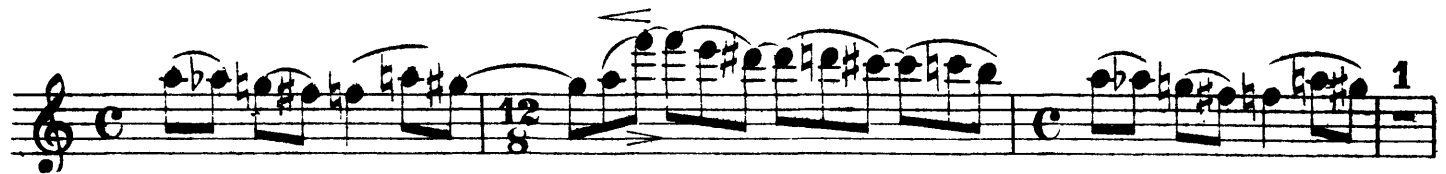
Peter Ilyich Tchaikovsky
Francesca da Rimini, Op. 32

Violino 1

Andante lugubre.



Più mosso. Moderato.



Violino 1

f *ff* *accel.*

ff

dim.

Tempo I

p *ritenuto.*

Allegro vivo

pp *p* *mf* *p*

mf *p* *mf* *p* *mf*

p

p

p *mf* **1**

Violino 1

This page of the Violino 1 score for Tchaikovsky's *Francesca da Rimini* contains ten staves of music. The key signature is one sharp (F#), and the time signature is 3/4. The score begins with a *p* (piano) dynamic and features several dynamic markings: *mf* (mezzo-forte), *f* (forte), *ff* (fortissimo), and *fff* (fortississimo). The music is characterized by rapid sixteenth-note passages, often with slurs and accents. Fingerings are indicated by numbers 1, 2, 3, 4, and 5. Specific fingering instructions include "1" above notes, "1 D" above a double bar line, and "8" above a sequence of notes. A large "8" is also placed above a group of notes in the sixth staff. The score includes various articulations such as slurs, accents, and hairpins. The piece concludes with a fermata over the final note.

Violino 1

The musical score for Violino 1 is written in G major and 4/4 time. It consists of 11 staves of music. The first two staves feature a melodic line with slurs and accents. The third and fourth staves continue this line with slurs and accents. The fifth and sixth staves feature a more complex rhythmic pattern with slurs and accents. The seventh and eighth staves feature a melodic line with slurs and accents. The ninth and tenth staves feature a melodic line with slurs and accents. The eleventh staff features a melodic line with slurs and accents. The score includes various dynamics such as *ff*, *mf*, and *f*. Performance instructions include *divisi* and *Unis.*. The score also includes a section marked *G 4* and another marked *H*.

Violino 1

The musical score for Violino 1 is written in G major (one sharp) and consists of ten staves. The music is characterized by dense, often sixteenth-note passages. Key features include:

- Staff 1:** Starts with a *fff* dynamic marking. A fermata labeled 'J' is placed over the first measure.
- Staff 2:** Continues the melodic line with various articulations.
- Staff 3:** Features a fermata labeled 'K' over a complex sixteenth-note passage.
- Staff 4:** Shows a dynamic shift to *ff* and includes a fermata labeled '8'.
- Staff 5:** Continues the *ff* dynamic with a fermata labeled '8'.
- Staff 6:** Includes a fermata labeled '8' and a *divisi* instruction.
- Staff 7:** Features a *divisi* instruction and a fermata labeled '8'.
- Staff 8:** Includes a *Unis.* instruction and a fermata labeled '8'.
- Staff 9:** Features a *divisi* instruction and a fermata labeled '8'.
- Staff 10:** Concludes with a *Unis.* instruction and a fermata labeled '8'.

Violino 1

M

Andante cantabile non troppo.

Con Sordini.

N pizz.

Violino 1

Musical score for Violino 1, measures 1-18. The score consists of five staves. The first staff begins with a forte (*f*) dynamic. The second staff includes the instruction *largamente*. The third staff starts with a piano (*p*) dynamic. The fourth staff includes *pizz.* and *pp*. The fifth staff includes *cresc.*, *p*, and *mf*. A first ending bracket labeled '2' spans the final two measures of the fifth staff.

Lo stesso tempo.

Musical score for Violino 1, measures 19-31. The score consists of five staves. The first staff is in 12/8 time and includes a first ending bracket labeled '4' and a *pp* dynamic. The second and third staves feature dotted rhythms with a *pp* dynamic. The fourth staff includes a *p* dynamic and *cresc.*. The fifth staff includes a *f* dynamic and the instruction *Senza Sordini.* at the end.

Violino 1

pp

1

p

sempre p

f

Q

f *l* *arg* *mente* *cresc.*

ff

ff

poco accel.

12

8

8

2

2

Detailed description: This page contains the first system of a Violino 1 score for Tchaikovsky's 'Francesca da Rimini'. It consists of ten staves of music. The first staff begins with a *pp* dynamic and a first ending bracket labeled '1'. The second and third staves feature complex triplets and slurs. The fourth staff includes a 'Q' marking and the instruction 'sempre p'. The fifth staff continues the melodic line. The sixth staff has a *f* dynamic and a '4' marking. The seventh staff is marked 'R' and includes the instruction 'f l arg mente cresc.'. The eighth staff starts with *ff* and a '12' marking. The ninth staff is marked 'poco accel.' and includes a '4' marking and a '8' measure rest. The tenth staff concludes with a '2' marking and a '2' measure rest.

Violino 1

fff

p

cresc. mf *p* *p*

Allegro vivace.

ff

fff

Allegro vivo.

12 *p* *mf* *p*

mf *p* *p* *mf*

Violino 1

The musical score for Violino 1 is written in G major (one sharp) and consists of ten staves. The first two staves begin with a **T** (Tutti) marking and a *p* (piano) dynamic. The first staff contains a series of sixteenth-note chords, and the second staff contains a similar pattern with a *b* (basso) marking. The third staff introduces a *cresc.* (crescendo) marking and a *mf* (mezzo-forte) dynamic, with a first finger (**1**) fingering indicated. The fourth staff continues with *cresc.* and *p* dynamics, also featuring a **1** fingering. The fifth staff shows *p* and *mf* dynamics with a **1** fingering. The sixth staff features *mf* dynamics and a **1** fingering. The seventh staff begins with a **1** fingering, a *mf* dynamic, and a *cresc.* marking, followed by a **U** (Uppercut) marking. The eighth staff is marked *ff* (fortissimo) and includes a **8** (ottava) marking. The ninth and tenth staves conclude the page with various melodic lines and dynamics.

Violino 1

This page contains the first violin part of Tchaikovsky's 'Francesca da Rimini', page 11. The score is written on ten staves in treble clef with a key signature of one sharp (F#). The music is characterized by dense, rapid sixteenth-note passages, often with slurs and accents. Performance markings include *ff* (fortissimo) and *ffz* (fortissimo with accent). Technical markings include 'X' above a note on the second staff, 'Z' above a note on the sixth staff, and '8' (octave) markings above notes on the fourth, seventh, and tenth staves. The word *divisi* (divided) appears on the seventh and eighth staves, and *Unis.* (unison) appears on the seventh and tenth staves. The score concludes with a final *Unis.* marking on the tenth staff.

Violino 1

Two staves of musical notation in treble clef with a key signature of one sharp (F#). The first staff contains a continuous eighth-note melody. The second staff continues the melody, featuring dynamic markings *f* and *mf*, and a measure with a '4' above it.

Poco più mosso.

Continuation of the musical score for Violino 1. The third staff begins with a '3' above it, indicating a triplet, and includes the marking *cresc.*. The fourth and fifth staves feature a series of eighth-note patterns with dynamic markings *ff* and *fff*. The sixth and seventh staves continue with similar eighth-note textures. The eighth staff includes a measure with a '1' above it. The final staff concludes with a double bar line and a fermata.

Peter Ilyich Tchaikovsky
Francesca da Rimini, Op. 32

Andante lugubre **Violino 2**

The first staff of music is in C major, 6/8 time. It begins with a fermata on a whole note C4. The tempo is *Andante lugubre*. The piece starts with a sixteenth-note triplet: C4, D4, E4. This is followed by a quarter note F4, a quarter note G4, and a quarter note A4. The next measure contains a quarter note B4, a quarter note C5, and a quarter note B4. The final measure contains a quarter note A4, a quarter note G4, and a quarter note F4. The piece concludes with a fermata on a whole note C4. The dynamic marking *f* is present at the beginning and end of the piece.

Più mosso. Moderato

The second staff begins with a first measure rest, followed by a 12/8 time signature change. The tempo is *Più mosso. Moderato*. The piece starts with a sixteenth-note triplet: C4, D4, E4. This is followed by a quarter note F4, a quarter note G4, and a quarter note A4. The next measure contains a quarter note B4, a quarter note C5, and a quarter note B4. The final measure contains a quarter note A4, a quarter note G4, and a quarter note F4. The dynamic marking *mf* is present at the beginning.

The third staff contains a first measure rest, followed by a 12/8 time signature change. The piece starts with a sixteenth-note triplet: C4, D4, E4. This is followed by a quarter note F4, a quarter note G4, and a quarter note A4. The next measure contains a quarter note B4, a quarter note C5, and a quarter note B4. The final measure contains a quarter note A4, a quarter note G4, and a quarter note F4. The dynamic marking *f* is present at the beginning.

The fourth staff contains a first measure rest, followed by a 12/8 time signature change. The piece starts with a sixteenth-note triplet: C4, D4, E4. This is followed by a quarter note F4, a quarter note G4, and a quarter note A4. The next measure contains a quarter note B4, a quarter note C5, and a quarter note B4. The final measure contains a quarter note A4, a quarter note G4, and a quarter note F4. The dynamic marking *f* is present at the beginning.

The fifth staff contains a first measure rest, followed by a 12/8 time signature change. The piece starts with a sixteenth-note triplet: C4, D4, E4. This is followed by a quarter note F4, a quarter note G4, and a quarter note A4. The next measure contains a quarter note B4, a quarter note C5, and a quarter note B4. The final measure contains a quarter note A4, a quarter note G4, and a quarter note F4. The dynamic marking *f* is present at the beginning.

The sixth staff contains a first measure rest, followed by a 12/8 time signature change. The piece starts with a sixteenth-note triplet: C4, D4, E4. This is followed by a quarter note F4, a quarter note G4, and a quarter note A4. The next measure contains a quarter note B4, a quarter note C5, and a quarter note B4. The final measure contains a quarter note A4, a quarter note G4, and a quarter note F4. The dynamic marking *f* is present at the beginning.

The seventh staff contains a first measure rest, followed by a 12/8 time signature change. The piece starts with a sixteenth-note triplet: C4, D4, E4. This is followed by a quarter note F4, a quarter note G4, and a quarter note A4. The next measure contains a quarter note B4, a quarter note C5, and a quarter note B4. The final measure contains a quarter note A4, a quarter note G4, and a quarter note F4. The dynamic marking *f* is present at the beginning.

The eighth staff contains a first measure rest, followed by a 12/8 time signature change. The piece starts with a sixteenth-note triplet: C4, D4, E4. This is followed by a quarter note F4, a quarter note G4, and a quarter note A4. The next measure contains a quarter note B4, a quarter note C5, and a quarter note B4. The final measure contains a quarter note A4, a quarter note G4, and a quarter note F4. The dynamic marking *f* is present at the beginning.

The ninth staff contains a first measure rest, followed by a 12/8 time signature change. The piece starts with a sixteenth-note triplet: C4, D4, E4. This is followed by a quarter note F4, a quarter note G4, and a quarter note A4. The next measure contains a quarter note B4, a quarter note C5, and a quarter note B4. The final measure contains a quarter note A4, a quarter note G4, and a quarter note F4. The dynamic marking *f* is present at the beginning.

The tenth staff contains a first measure rest, followed by a 12/8 time signature change. The piece starts with a sixteenth-note triplet: C4, D4, E4. This is followed by a quarter note F4, a quarter note G4, and a quarter note A4. The next measure contains a quarter note B4, a quarter note C5, and a quarter note B4. The final measure contains a quarter note A4, a quarter note G4, and a quarter note F4. The dynamic marking *f* is present at the beginning.

The eleventh staff contains a first measure rest, followed by a 12/8 time signature change. The piece starts with a sixteenth-note triplet: C4, D4, E4. This is followed by a quarter note F4, a quarter note G4, and a quarter note A4. The next measure contains a quarter note B4, a quarter note C5, and a quarter note B4. The final measure contains a quarter note A4, a quarter note G4, and a quarter note F4. The dynamic marking *dim.* is present at the beginning. The piece concludes with a fermata on a whole note C4. The dynamic marking *p* is present at the end of the piece. The tempo marking *ritenuto* and the page number *U. 1 p.* are present at the bottom right.

Violino 2

Tempo I. Allegro vivo.

7 8

mf *pp* *mf* *p* *mf*

p *mf* *p* *C*

p *mf* *p* *1*

p *mf* *mf* *1* *1* *1* *1*

1 *D* *cresc.*

ff

fff

sempre fff

E *f*

Violino 2

The musical score for Violino 2 in Tchaikovsky's *Francesca da Rimini* (page 3) is written in G major and consists of ten staves. The notation includes various dynamics and articulations:

- Staff 1: Rapid sixteenth-note passages.
- Staff 2: Dynamics *ff* and *f*; chordal marking **F**.
- Staff 3: Rapid sixteenth-note passages.
- Staff 4: Rapid sixteenth-note passages with accents (>).
- Staff 5: Dynamics *f*, *mf*, and *mf*; chordal marking **G**; fingerings 4, 2, 2.
- Staff 6: Rapid sixteenth-note passages.
- Staff 7: Dynamics *f* and *ff*.
- Staff 8: Dynamics *f*; chordal marking **H**.
- Staff 9: Dynamics *ff*; articulation *div.*; ending with *Unis.*
- Staff 10: Rapid sixteenth-note passages.

Violino 2

Musical score for Violino 2, measures 41-54. The score is written on ten staves in treble clef with a key signature of one sharp (F#). The music features various dynamics and articulations:

- Measure 41: *ff* (fortissimo), marked with a 'J' above the staff.
- Measure 42: *ff* (fortissimo).
- Measure 43: *ff* (fortissimo).
- Measure 44: *ff* (fortissimo), marked with a 'K' above the staff.
- Measure 45: *ff* (fortissimo).
- Measure 46: *ff* (fortissimo).
- Measure 47: *ff* (fortissimo).
- Measure 48: *ff* (fortissimo), marked with an 'L' above the staff.
- Measure 49: *ff* (fortissimo), marked with 'div.' (divisi) above the staff.
- Measure 50: *ff* (fortissimo), marked with 'Unis.' (unisono) above the staff.
- Measure 51: *ff* (fortissimo), marked with 'div.' (divisi) above the staff.
- Measure 52: *ff* (fortissimo).
- Measure 53: *ff* (fortissimo).
- Measure 54: *ff* (fortissimo), marked with an 'M' above the staff and ending with a double bar line and the number '44' below it.

Violino 2

Andante cantabile non troppo.

Cott Sordini *arco*

p pizz.

poco cresc.

mf

dim. *f*

poco cresc.

mf *p*

6 N pizz.

arco cresc. *mf* *f*

largamente

pp *pizz.* *p*

cresc. *mf* *2*

Violino 2

Lo stesso tempo.

pp

1

Simile

ppp

1 2 3 4 5 6

7 **P₂** *p* *cresc.*

5 *3* *1*

Senza Sorcini *pp*

3 *3* *3* *3*

3 *3* *3* *3*

3 *3* *3* *3*

3 *3* *3* *3*

Q *3* *3* *3* *3*

sempre p

Violino 2

R largamente
f *cresc.* *ff*
ff
S
fff

Violino 2

Musical score for Violino 2, measures 1-12. The music is in G major and 2/4 time. It features a series of eighth-note patterns with accents and slurs. Dynamics include *p* and *mf*.

Allegro vivace.

Musical score for Violino 2, measures 13-16. The music is in G major and 2/4 time. It features a series of eighth-note patterns with accents and slurs. Dynamics include *ff* and *fff*. Measure numbers 2, 8, and 8 are indicated above the staff.

Allegro vivo.

Musical score for Violino 2, measures 17-24. The music is in G major and 2/4 time. It features a series of eighth-note patterns with accents and slurs. Dynamics include *p*, *mf*, and *cresc.*. Measure numbers 8 and 1 are indicated above the staff.

Violino 2

The musical score for Violino 2 in Tchaikovsky's *Francesca da Rimini* is presented on ten staves. The key signature is one sharp (F#), and the time signature is 3/4. The score includes the following elements:

- Staff 1:** Starts with a dynamic of *p* (piano), followed by a crescendo to *mf* (mezzo-forte), then *p*, and another crescendo to *mf*. Fingering '1' is indicated above the first and last notes of the first measure.
- Staff 2:** Begins with *p*, followed by *mf*. Fingering '1' is shown above the first and last notes of the first measure.
- Staff 3:** Features a dynamic of *mf* with a *cresc.* (crescendo) marking. A 'U' (up-bow) instruction is placed above the first measure.
- Staff 4:** Marked with *ff* (fortissimo).
- Staff 5:** Marked with *fff* (fortississimo).
- Staff 6:** Continues the melodic line.
- Staff 7:** Continues the melodic line.
- Staff 8:** Continues the melodic line.
- Staff 9:** Contains a bowing instruction 'X' above a specific note.
- Staff 10:** Ends with a dynamic of *f* (forte).

Violino 2

The musical score for Violino 2 consists of eight staves of music. The first staff begins with a dynamic marking of *ff* and features a melodic line with a slur. The second staff continues the melodic line with a slur. The third staff starts with a *Z* marking and a dynamic of *fff*. The fourth staff is marked *div.* and *Unis.*, showing a dense texture of chords. The fifth staff continues the melodic line. The sixth staff is marked *div.* and *unis.*, with a dense chordal texture. The seventh staff continues the melodic line. The eighth staff concludes the page with a dynamic of *5*.

Violino 2

Poco più mosso.

The musical score for Violino 2 is written in G major (one sharp) and 4/4 time. It begins with a mezzo-forte (*mf*) dynamic. The first staff contains the initial melodic phrase. The second staff includes a *cresc.* marking and ends with a fortissimo (*ff*) dynamic. The third staff features a fortississimo (*fff*) dynamic marking. The piece concludes with a fermata on the final note of the tenth staff.