

# Igor Stravinsky Pulcinella Suite

ALLEGRO MODERATO

TRUMPET  
SINFONIA A  
(COVERTURE)

Handwritten musical notation for the first section of the trumpet part, measures 1-7. The notation is on a single staff with a treble clef and a key signature of one sharp (F#). The time signature is 4/4. The notes are: 1. F#4, 2. G4, 3. A4, 4. B4, 5. C5, 6. B4, 7. A4. The notes are grouped with stems and flags. Above the notes are circled measure numbers 1 through 7. The piece ends with a double bar line.

Empty musical staff with a double bar line.

SERENATA

LARGHETTO

Handwritten musical notation for the second section of the trumpet part, measures 8-15. The notation is on a single staff with a treble clef and a key signature of two flats (Bb, Eb). The time signature is 4/8. The notes are: 8. Bb4, 9. Ab4, 10. Gb4, 11. Fb4, 12. Eb4, 13. D4, 14. C4, 15. Bb4. The notes are grouped with stems and flags. Above the notes are circled measure numbers 8 through 15. The piece ends with a double bar line.

Empty musical staff with a double bar line.

a) SCHERZINO

Handwritten musical notation for the third section of the trumpet part, measures 16-29. The notation is on a single staff with a treble clef and a key signature of one sharp (F#). The time signature is 4/4. The notes are: 16. F#4, 17. G4, 18. A4, 19. B4, 20. C5, 21. B4, 22. A4, 23. G4, 24. F#4, 25. E4, 26. D4, 27. C4, 28. B3, 29. A3. The notes are grouped with stems and flags. Above the notes are circled measure numbers 16 through 29. The piece ends with a double bar line.

v.s.

TRUMPET

b) ALLEGRO

Musical score for Trumpet part b) ALLEGRO, measures 30-41. The score is written on a single staff in treble clef with a key signature of one sharp (F#) and a 3/8 time signature. Measure 30 starts with a dynamic marking of *pp* and a fermata. Measures 31-40 contain eighth and sixteenth notes with various dynamic markings including *f* and *pp*. Measure 41 is marked *MENO MOSSO* and ends with a double bar line.

c) ANDANTINO

Musical score for Trumpet part c) ANDANTINO, measures 42-51. The score is written on a single staff in treble clef with a key signature of one flat (Bb) and a 2/4 time signature. Measures 42-51 consist of a sequence of notes with fingerings indicated by numbers 4, 5, 6, 7, and 8. Measure 52 is a single note with a fermata and a double bar line.

IV

TARANTELLA

Musical score for Trumpet part IV TARANTELLA, measures 52-64. The score is written on three staves in treble clef with a key signature of one flat (Bb) and a 6/8 time signature. Measures 52-64 feature a rhythmic pattern of eighth and sixteenth notes with various dynamic markings including *sf*. Measure 64 ends with a double bar line.

TRUMPET

V

TOCCATA

65 ALLEGRO

SOLA



66



67



68



69

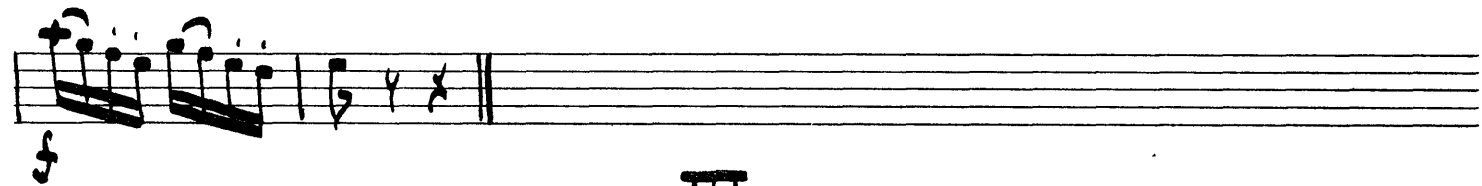
70

SOLA



71

72



VI

GAYOTTE

73 ALLEGRO MODTO



74

75

76

mp

TRUMPET

VARIATION I a

77 ALLEGRETTO

77 ALLEGRETTO

78

79

80

ATTACCA

VARIATION II a

81 ALLEGRO PIU TOSTO MODTO

81 ALLEGRO PIU TOSTO MODTO

82

83

84

VII

DUETTO

85 VIVO

85 VIVO

86

87

88

89

90

ff marc.

ff

TRUMPET

91 92 93

VIII

a) MINUETTE

94 MOLTO MODERATO

94 95 96 97 98

mf DOLCE CANT.

101 102

p cresc. --- Poco a poco ---

b) FINALE

102 ALLEGRO ASSAI

102 103

ff SIM.

104 105

ff

Stravinsky — Pulcinella

The Orchestra Musician's  
CD-ROM LIBRARY™

TRUMPET

Musical score for Trumpet in Stravinsky's Pulcinella, measures 105-118. The score consists of seven staves of music. Measure 105 begins with a dynamic of *f*. Measure 106 includes a *SOLO* marking. Measure 107 has dynamics *sf*, *mf*, and *sf*. Measure 108 includes a *SOLO* marking and a *PLAY OUT* instruction. Measure 109 has a dynamic of *f* and a *SIM.* marking. Measure 110 includes a *Poco sf* marking. Measure 111 has a dynamic of *f*. Measure 112 has a dynamic of *f*. Measure 113 has a dynamic of *ff*. Measure 114 has a dynamic of *f*. Measure 115 includes a *sub. p* marking. Measure 116 has a dynamic of *f*. Measure 117 has a dynamic of *ff* and a *SOLO* marking. Measure 118 has a dynamic of *ff* and a *SIM.* marking.

105 106 107 108 109 110 111 112 113 114 115 116 117 118

*f* *SOLO* *sf* *mf* *sf* *SOLO* *PLAY OUT* *f* *SIM.* *Poco sf* *f* *f* *ff* *f* *sub. p* *f* *ff* *SOLO* *ff* *SIM.*