

Peter Ilyich Tchaikovsky  
Suite Characteristique

I. Jeu de sons.

TIMPANI C.G.D.

Andantino un poco rubato. Allegro molto vivace, Alla breve. Tuba.

23 A 23 12 B 31 C 17 D 1 2

3 2 2 1

ff

E 20 Viol.I. Piu mosso. Viol.I. 18

21 22 23 24 ff 19 20

F 2 14 G 2

21 15 16 17 ff

8 1 1

ff ff

Tempo. 10 19 H 31 I 31 Fl.I. 32

33 34 35 ff sfp 2 3 4 5 6

5 p cres - cen - do Piu mosso 21 L 18 Viol.I. 19

ff fff

Viol.II. Viol.I. M 2 8 N

20 21 fff fff ff

Andantino. 3 24

## II. Valse.

### TIMPANI G.A.D.

**Moderato Tempo di Valse.**

48 A 46 B Flauti

Tempo I molto sostenuto.

4 15 C 13 FLI.

16 17 1 2 3 4 5 6 pp

7 8 9 10 11 12 13 14

15 D 14 string. Ob. Pin molto, vivace.

15 16 ff f

2 2 2 ff f ff f ff

E 2 2 2 f ff f ff f

2 F 49 G 46 Flauti

47 48

49 50 51 52 1 H 46 ff

Detailed description of the musical score: The score is for the Timpani part of the second waltz in Tchaikovsky's Suite Characteristique. It is in 3/4 time and consists of 52 measures. The score is divided into sections A through H. Section A (measures 48-46) is marked 'Moderato Tempo di Valse'. Section B (measures 1-5) is marked 'Tempo I molto sostenuto'. Section C (measures 4-15) is marked 'Tempo I molto sostenuto'. Section D (measures 15-14) is marked 'Pin molto, vivace'. Section E (measures 2-2) is marked 'Pin molto, vivace'. Section F (measures 2-2) is marked 'Pin molto, vivace'. Section G (measures 49-46) is marked 'Pin molto, vivace'. Section H (measures 1-46) is marked 'Pin molto, vivace'. The score includes various dynamics such as *pp*, *f*, and *ff*, and articulations like accents and slurs. The instrumentation includes Flauti (Flutes) and Ob. (Oboe).

### III. Scherzo burlesque.

TIMPANI H.E.C.

Vivace con spirito.

24 A 32 B 28 Fl. I. II. C 32 D 30 Viol. I.

29 30 31 ff 31 32

33 34 ff 27 Ob. 28 29 30 31 fff 7 1 ff

2 3 4 5 6 7 34 F Fl. I. 1 2 3

4 5 f 11 Fl. I. 12 13 14

1 2 3 4 5 6 7 8 2 mf

G 8 20 H 5 f

Viol. I. 6 7 8 7 1 2 3 ff ff

4 5 6 7 I 27 Oboi. 28 29 30 31 fff ff

7 1 2 3 4 5 6 7 ff

### IV. Rêves d'enfant.

TIMPANI A. Cis. E.

Andante molto sostenuto. L'istesso tempo. Fl. I.

14  $\text{A}_8$   $\text{B}_{11}$   $\text{C}_8$

$\text{D}_1$   $\text{p}$   $\text{pp}$  *cres.*

*f* *cen do*  $\text{ff}$

$\text{E}_5$   $\text{ff}$   $\text{L'istesso tempo. 1}$

$\text{F}_2$   $\text{Lo stesso tempo, ma un poco capriccioso}$   $\text{pp}$   $\text{pp}$   $\text{3}$

$\text{G}_6$   $\text{Poco piu mosso. 2}$   $\text{a tempo 6}$   $\text{ritard. 9}$   $\text{8}$   $\text{Tempo I. 4}$   $\text{H}$

Viol. I.  $\text{5}$   $\text{6}$   $\text{13}$

V. Danse baroque.

TIMPANI G. C. E.

Vivacissimo.

40  $\Delta$  3 Viol. I.

1 1 1 1 1 1 1 1

1 1 1 1 1 1 1 1

B 1 1 1 1 1 1 23 C 8

*sf* *sempre f* *cresc.* *ff*

Viol. I. 9 10 11 12 13 14 15 16

Fag. 1 2 3 4 5 6

7 1 D 1 2 3 4 5 6 21 Viol. I. 22 23

*mf*

24 25 *ff*

1 E 16 F 27 Fl. I. G 1 2 3 4 5 6 7 12 Prestissimo.

28 29 30 31 *fff*

Viol. I. 13 14 15 16 *ff* 8 H 8 9

Viol. II. 10 11 12 13 14 15 16 17 18 19 20 21 22 23 24 25 26 27 28 29 30 31 32 33 34 35 36 37 38 39 40

Viola. Bassi 1 1 7 1

*ff* *ff* *ff*

Meno mosso.

3 3 8 1

*ff*

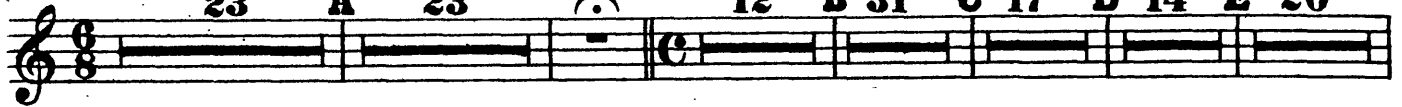
Peter Ilyich Tchaikovsky  
Suite Characteristique

**I. Jeu de sons.**

PIATTI.

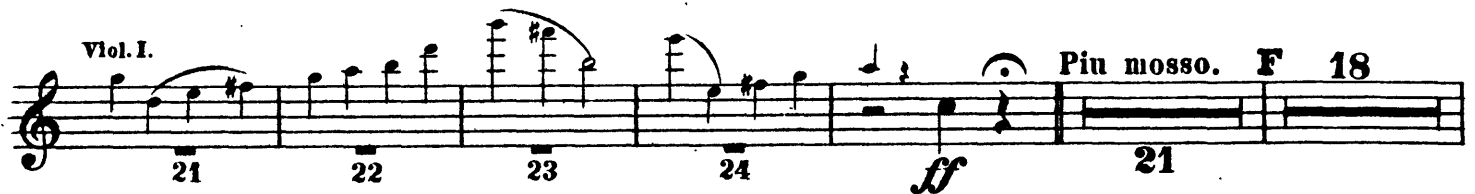
**Andantino un poco rubato.** **Allegro molto vivace.**

23 A 23 12 B 31 C 17 D 14 E 20



Viol. I.

**Piu mosso.** F 18



Viol. I.

Viol. II.

Viol. I.

**Tempo I.** G 34 H 31 I 34 J 13 K 6



**Piu mosso.** L 18



Viol. I.

Viol. II.

Viol. I.

M 12 N 15

**Andantino.**



**II. Valse TACET.**

**III. Scherzo burlesque.**

PIATTI e gr. CASSA.

**Vivace, con spirito.**

24 A 32 B 32 C 32 D 30

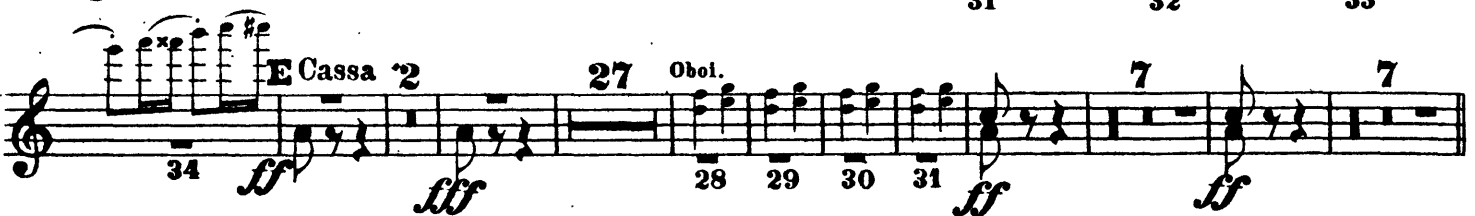


E Cassa 2

27 Obol.

7

7



34 F 34 G 36 H 24 I 29

Obol.

7

6



IV. Rêves d'enfant ТАСЕТ.

V. Danse baroque.

PIATTI e gr. CASSA.

Vivacissimo.

40 A 39 B 36 C Viol. I. 37 38 39

PIATTI: (палочкой объ одну изъ тарелокъ.) (палочкой объ тарел. ку.) 12 D 30 Viol. I.

Mit Schwammklöppel. 3 Mit Schw.kl. 31 32

E 8 7 F 26 Viol. I. 27 28 29 30

G 6 Prestissimo. Viol. I. 28 H 1 2 3 4

Meno mosso. 3

Peter Ilyich Tchaikovsky  
Suite Characteristique

I. Jeu de sons. TACET.

II. Valse.

TRIANGOLO.

Moderato tempo di Valse.

Oboe I.

48 A 46 B 20 21 22 23 24 25

C 1 2 3 4

26 27 28 *pp*

5 6 7 8 9 10 11

*poco più f* *mp* *dim.*

12 13 14 15 16 14

*p* *pp*

Fagott I. D 1 2 3 4 5

15 16 *pp*

6 7 8 9 10 11 12

*mp*

Più mosso.

13 14 *stringendo* 16 E 15 F 107 G 48

*mp*



**III. Scherzo burlesque. TACET.**

**IV. Rêves d'enfant.**

TRIANGOLO.

**Andante molto sostenuto.**

14 **A** 6 *Viol. I.*

**B** 7 *pp*

*L'istesso tempo.* **C** 10 **D** 4 *Corni 1. 2.*

1 2 3

4 5 6 **E** 5

*L'istesso tempo.* *Lo stesso tempo ma un poco capriccioso. Poco più mosso.* 11 **F** 2 3 9

*a tempo* *ritard.* *Tempo I.* **G** 9 8 24

**V. Danse baroque. TACET.**

Peter Ilyich Tchaikovsky  
Suite Characteristique

I. Jeu de sons. II. Valse.  
III. Scherzo burlesque. IV. Rêves d'enfant. TACET.

V. Danse baroque.

Vivacissimo.

TAMBURINO.

Musical score for Violin I and Viola parts of 'Danse baroque'. The score is in 2/4 time and consists of 31 measures. It begins with a key signature of one sharp (F#) and a tempo marking of 'Vivacissimo'. The score is divided into sections A, B, C, D, E, F, and G. Section A (measures 1-3) is marked '40' and 'A 3'. Section B (measures 4-23) is marked 'B' and 'sempre f'. Section C (measures 24-31) is marked 'C' and 'Viola 3'. Section D (measures 1-3) is marked 'D 21 22 23'. Section E (measures 8-16) is marked 'E 16 F 27'. Section F (measures 28-31) is marked 'F 28 29 30 31'. Section G (measures 1-7) is marked 'G 1 2 3 4 5 6 7'. The score includes various musical notations such as slurs, accents, and dynamic markings.

Prestissimo.

Musical score for Basses and Violin I parts of 'Danse baroque'. The score is in 2/4 time and consists of 7 measures. It begins with a key signature of one sharp (F#) and a tempo marking of 'Prestissimo'. The score is divided into sections H and I. Section H (measures 1-7) is marked 'H' and 'Baasi'. Section I (measures 1-7) is marked 'I'. The score includes various musical notations such as slurs, accents, and dynamic markings.