

Antonín Dvorák  
Symphony No. 2 in Bb Major, Op. 4

I.

TIMPANI

*Allegro con moto*  
in B $\flat$ F

pp cresc.

11 12 Trbn. A 1 2 3 4

5 6 7 8 13 Fag. Vc. Cb. 14. 15.

*B poco tranquillo* Solo

f f pp

pp

1 2 3 4 5 6

f ff

3 7 frum ff

2 trun 1 n 1 frum

f f ff

C 11 frum 2 3 4 5 6 7 8

pp

# Timpani

Poco tranquillo

Tempo I.

Timpani staff 1: Bass clef, 3/4 time signature. Measures 3, 5, and 12 are indicated. Dynamics include *pp* and *f*.

Vc. Cb. staff 1: Bass clef. Measures 15 and 21 are indicated. Dynamics include *f* and *pp*. Chordal markings *D* and *E* are present.

Fl. Ob. staff 1: Bass clef. Measures 21, 22, 23, 24, and 25 are indicated. Dynamics include *pp*. Chordal marking *E* is present.

Timpani staff 2: Bass clef. Measures 3, 4, 5, 6, 7, and 8 are indicated. Dynamics include *cresc.* and *f*. Chordal marking *E* is present.

Timpani staff 3: Bass clef. Measures 3, 4, and 5 are indicated.

Timpani staff 4: Bass clef. Measures 6 and 8 are indicated.

Timpani staff 5: Bass clef. Measures 1, 2, 3, 4, 5, 6, 7, 8, 1, and 2 are indicated. Dynamics include *ff*, *fp*, *pp*, and *dim.*

Timpani staff 6: Bass clef. Measures 3, 4, 1. 5, 6, 2. 1, 2, 3, 4, 5, and 6 are indicated. Dynamics include *pp*.

Timpani staff 7: Bass clef. Measures 7, 8, 9, 10, 11, 8, and 40 are indicated. Dynamics include *f* and *pp*. Chordal marking *F* is present.

Cor. I. II. staff 1: Bass clef. Measures 1, 2, 3, and 4 are indicated. Dynamics include *f*, *dim.*, and *p*. Chordal marking *G* is present.

Fag. staff 1: Bass clef. Measures 12, 13, 14, 15, and 16 are indicated. Dynamics include *cresc.*

Timpani

Solo

*pp*

H 8

9 Cor. 2 *pp*

10. 11. 12. 13.

22 K Cor. III-IV *f*

1 2 3 4 5

6 7 8 10 1 2 3 4 5

*pp*

6 7 8 14 Fac. Cl. 15. 16.

17. *fp* L 7 7 *f*

2 3 *ff* *f* *ff*

3 M 28 Trbns Vi- N 1 2 *ff*

29. 30. 31. 32.

3 4 5 6 7 8

Detailed description of the musical score: The score is written for a single timpani player. It consists of ten staves of music. The first staff begins with a 'Solo' marking and a piano (*pp*) dynamic. The second staff includes a measure rest of 8 measures, marked with 'H'. The third staff has a measure rest of 9 measures, marked with 'Cor. 2' and *pp*. The fourth staff contains measure rests of 10, 11, 12, and 13 measures. The fifth staff starts with a measure rest of 22 measures, marked with 'K' and 'Cor. III-IV', followed by five notes marked with dynamics 1, 2, 3, 4, and 5, and a forte (*f*) dynamic. The sixth staff begins with a measure rest of 6 measures, followed by notes marked with dynamics 1, 2, 3, 4, and 5, and a piano (*pp*) dynamic. The seventh staff starts with a measure rest of 6 measures, followed by notes marked with dynamics 7, 8, and 14, and a 'Fac. Cl.' marking. The eighth staff begins with a measure rest of 17 measures, marked with 'L', followed by notes marked with dynamics 7 and 7, and a forte (*f*) dynamic. The ninth staff starts with a measure rest of 2 measures, followed by notes marked with dynamics 3 and 3, and a fortissimo (*ff*) dynamic. The tenth staff begins with a measure rest of 3 measures, marked with 'M', followed by a measure rest of 28 measures, marked with 'Trbns' and 'Vi-', and notes marked with dynamics 1 and 2, and a fortissimo (*ff*) dynamic. The final staff contains measure rests of 3, 4, 5, 6, 7, and 8 measures.

Timpani

27 -de 0 10 Trbnni

11. 12. 13. 14.

f 3 P 2 1 pp

2 3 4 5 6 7 8 9 10 pp

11 12 Poco tranquillo Tempo I. Cor. II. 13. 14. 15. 16.

Q f 1 1 1 f

f ff

5 2 accelerando 1

6 poco meno allegro fp pp

R poco tranquillo Poco meno Andante tempo I. pp

2 poco a poco S ritard. Più animato Trbne basso 8 9. 10.

Timpani

11. *ff*

1 2 3 *accel.*

4 *ff*

5 6 7 8 9 *fff*

*Presto*

5 *ff*

II.

*Poco adagio*  
Timpani Es. B

22 A 2 rit. a tempo Fag. 3.

4. *p*

Solo *pp* 5 1 rit. B a tempo 10

Fag. 11. 12. Solo *pp*

6 Cor. I. 7. 8.

C Solo *pp* *pp* *pp* muta in G.D. 11

Timpani

7 Trbne III. in G, D  
8. 9. *fz pp* — *pp*

2 E 10 Trbne III.  
*ff* 11.

F 22 G 2  
*ff* *fpp* *ffp* — *p*

Fag. *pp* *ff* *molto cresc.* *ffz* — *p* — *pp* *ppp* Vi-

-de 2 H Vi-  
*ff* *pp* — *ff*

*pp* *ppp* *ff*

1 -de  
*fff* *pp*

*ppp*

III.  
SCHERZO

Allegro con brio  
Timpani BF

16 Cor. I. II. 4  
17. 18. 19. 20.

Timpani

1 2 3 4 5

pp

6 1 2 3 4 5

poco a poco cresc. f

A 12 3 3 3

p dim. pp poco ritard. poco a poco più adagio in tempo

12 3 3 8 9.

ritardando a tempo B Viol. 9.

10. 11. 12.

f

1 1

ff ff fz fz

C 2

ff ff

1 1

ff

drum

drum

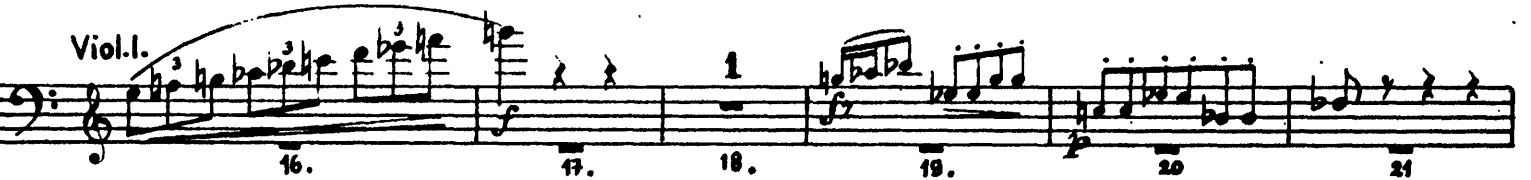
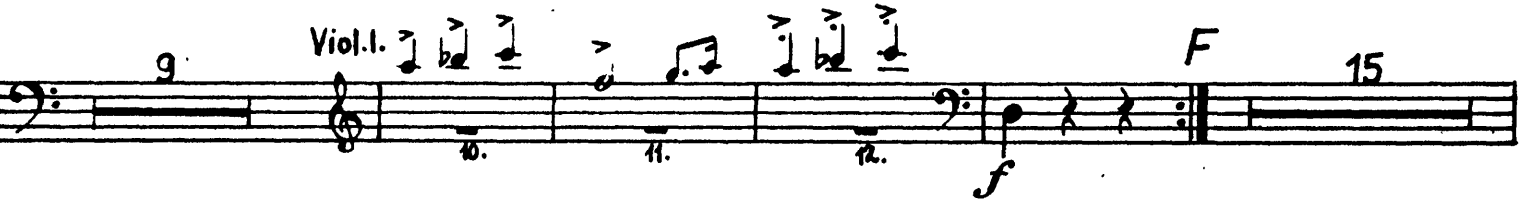
ffz ffz

ffz ffz

D 1

ff ff

Timpani





Timpani

Fl. I. *pp* *in B.F.*

21. 22. 23. 24. 1 2 3 4 5 *poco a*

6 7 8 9 10 11 *poco cresc.* *f* *f* *f*

12 *poco ritard.* *poco a poco più adagio* *in tempo* *ritardando*

*Aa* 12 3 3 3 12 3

*a tempo* *Trbel. II. 4.* *Bb* 1. 7

9. 10. 11. 12. *f*

*ff* *ff* *ffz*

*ffz* *ff* *ff* *ff*

*Cc<sub>2</sub>* 1 *ff*

*ff* 1 *ff*

*ffz* *ffz*

Detailed description of the musical score: The score is for the Timpani part of Dvorak's Symphony No. 2. It consists of ten staves of music. The first staff is for Flute I (Fl. I.), marked *pp* and *in B.F.*, with measures 21-24. The second staff continues from measure 6 to 11, with dynamics *poco cresc.* and *f*. The third staff continues from measure 12 to 12, with tempo markings *poco ritard.*, *poco a poco più adagio*, *in tempo*, and *ritardando*. The fourth staff is for Trumpet II (Trbel. II.), marked *a tempo* and *pp*, with measures 4 and 5. The fifth staff is for Violin I (Violl.), with measures 9-12, marked *f*. The sixth staff is for Trombone I (Bb), with measures 1 and 7, marked *ff*. The seventh staff is for Trombone II (Bb), with measures 1 and 7, marked *ffz*. The eighth staff is for Trumpet II (Cc<sub>2</sub>), with measures 1 and 7, marked *ff*. The ninth staff is for Trombone I (Bb), with measures 1 and 7, marked *ff*. The tenth staff is for Trombone II (Bb), with measures 1 and 7, marked *ffz*.

Timpani

*Dd 1*  
*ff*

*ff*

*rit.* *Coda 1*  
*p*

3 4 5 6

7 8 9 10

11 *Meno allegro* *rit.* *Quasi andante* *Adagio*  
*pp*

*Allegro, tempo I.*  
*Viol. I. b.*

12 13 14 15

16 17 18

*ff* *ff*

*rit.* *Presto assai*  
36

Timpani

IV.  
FINALE

Allegro con fuoco (alla breve)

in D, B, A *pp*

9 23 Trbns III. 24. 25. *A* *ff*

calando

*B* *ff* *Viol. I.* *più*

*f* *ff* *in B, F, A* *Viol. I.*

*Vi-* *ff*

*p* *cresc.* *ff* *C - de*

Timpani

33 34 35 36 37 38

*p*

39 40 41

Cor. I. II. F

*pp* *sfz*

42 43 44 45 46 47 48

*f*

49 50 51 52 53 54

*f* *ff*

55 56 57 58 59

Viol. I. *ppp* Ob. II. *p*

60 61 62 63 64 65

*pp* *pp*

66 67 68 69 70

*f*

71 72 73 74 75 76

*p* *pp*

77 78 79 80 81

calando

Fag. I. II. *pp* Viol. I. *ppp*

82 83 84 85 86

*pp*

87 88 89 90 91

Cl. I. II. *mf*

Timpani

19. 20. *ff*

3 *f* *f*

3 H 31 Viol. I. *ff* 32. 33.

34. *f* *ff*

*fp* *fpp*

7 K 48 L 24 M 2 Trbne III.

Cor. 3 *ff* 4. 5. 6. 7. 8.

1 2 3 4 5 6 *f*

7 8. *br*

Un poco animato 13

Timpani

Viol. I.

4. 15.

*ff*

*fff* *ff*

3 4 5 6 7 8

*ff* *ff*

*ff* *ff*

*ff*

*ff*

*ff*

*ff*

Vivace 7

*ff*

1 1

*ff*