

Peter Ilyich Tchaikovsky  
Swan Lake Suite, Op. 20a

1

Oboe I

No. 1 SCÈNE

Moderato

1

*p espress.*

*cresc.*

*f* *ff* *f* 3 3 3 3

*stringendo*

*ff*

*Più mosso*

2 4 *fff* 6 *f*

# No. 2 VALSE

## Oboe I

INTRADA  
Tempo di Valse

6 6 31

FL. I-II

Ob. I

1

2

3

4

*f*

*ff*

*mf*

*p*

### Oboe I

The musical score for Oboe I is written in G major (one sharp) and 3/4 time. It consists of ten staves of music. The first staff begins with a forte (*ff*) dynamic. The second staff includes fingerings 5 and 6, a breath mark of 32, and another *ff* dynamic. The third staff continues with slurred notes. The fourth staff features a *ff* dynamic. The fifth staff has a *ff* dynamic. The sixth staff continues with slurred notes. The seventh staff starts with a piano (*p*) dynamic, includes a breath mark of 4, and ends with a *p* dynamic. The eighth staff contains first and second endings, with breath marks of 3, 1, 1, 14, and 2. The ninth staff includes a second ending, a breath mark of 2, a fingering of 9, and a breath mark of 4. The score concludes with a final note on the tenth staff.

### Oboe I

1. *p* 4 **10** *p*

1. 2.

**11** *f*

*ff* 1. 1.

2. **12** *p*

**13** 4 *p*

*mf cresc.*

**14** *ff*

### Oboe I

The musical score for Oboe I is written in G major (one sharp) and consists of ten staves. The notation includes various musical symbols such as slurs, accents, and dynamic markings. A measure number '15' is enclosed in a box on the fourth staff. The piece concludes with a double bar line on the tenth staff.

## No. 3 DANCES DES CYGNES

### Oboe I

*Allegro moderato*

1  
*p*

1

15

1  
*p*

1

*p*

*ff*

## No. 4 SCÈNE

*Andante*

*p*

*f* Cadenza arpa riten. molto

### Oboe I

**1** *Andante non troppo* *Violino Solo* **25** *riten.* **2** *Più mosso*

*pp*

*cresc.*

*cresc.*

*mf* *Violino Solo*

**3** **12**

**4** *p*

*cresc.*

**5** **5**

*mf*

Oboe I

*p cresc.*

*ritenuto* **2** **6** *Tempo I* **20** Violino Solo

*riten.* Ob. **3** *p*

No. 5 DANSE HONGROISE. CZARDAS

(Чардаш)

Moderato assai

*f*

**1** *Allegro moderato* **24**

Fl. I

Ob. I *f*

**2** *Vivace* **19** **3** **1** **1** *ff*

*p*



Oboe I

Musical score for Oboe I, Tchaikovsky's Swan Lake Suite, Op. 20a. The score consists of ten staves of music in G major (one sharp). The first staff begins with a treble clef and a key signature of one sharp. The second staff starts with a forte (*ff*) dynamic marking. The fourth staff has a boxed '4' above it, indicating a measure rest. The music features various rhythmic patterns, including eighth and sixteenth notes, and rests. The score concludes with a final note on the tenth staff.

# No. 6 DANSE ESPAGNOLE

## Oboe I

Allegro non troppo (Tempo di bolero)

16

*ff* *f*

1

*f* *mf*

1

*mf* *f*

2 2 1

*f*

3 **Lo stesso tempo**

17

*f*

Oboe I

The musical score for Oboe I is written on ten staves. The key signature is G major (one sharp) and the time signature is 3/4. The music begins with a series of eighth and quarter notes, some with slurs. A first measure rest is present at the start. A boxed '4' indicates a quadruplet in the second measure. The piece concludes with a first measure rest and a final note. Dynamic markings include *ff* (fortissimo) and *f* (forte). Performance instructions include *Più mosso* (faster) and numerical markings for triplets (3) and quadruplets (4).

# No. 7 DANSE NAPOLITAINE

## Oboe I

**Allegro moderato**



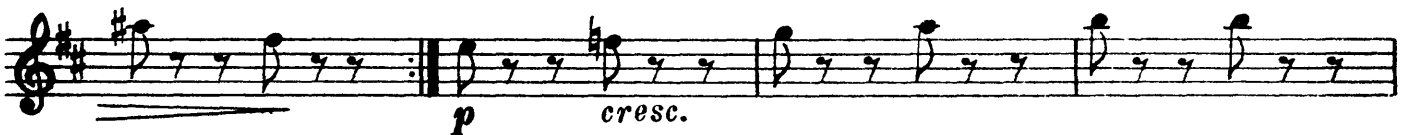
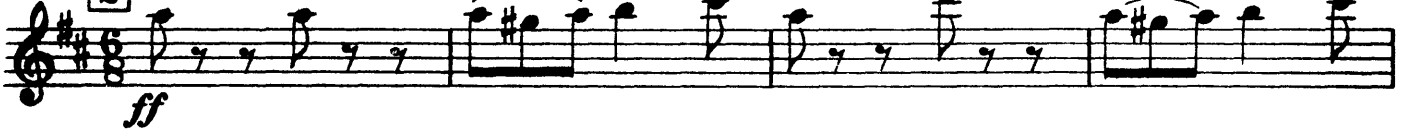
**Andantino quasi moderato**



**Molto più mosso**



**[2] Presto**



**[3]**



Oboe I

The musical score for Oboe I is written in G major (one sharp) and 3/4 time. It consists of ten staves of music. The first staff begins with a treble clef and a key signature of one sharp (F#). The music features a series of eighth notes with slurs. The second staff includes a first ending bracket and a dynamic marking of *f*. The third staff has a dynamic marking of *p* followed by *cresc.*. The fourth staff continues the melodic line. The fifth staff features a first ending bracket with the number 4 inside, and a dynamic marking of *ff*. The sixth and seventh staves consist of dotted notes. The eighth and ninth staves continue the melodic line with slurs. The tenth staff concludes the piece with a final cadence.

# No. 8 MAZURKA

## Oboe I

Tempo di mazurka

*ff* *ff* *ff* *ff* *ff* *p* *p*

Oboe I

3

3

3

5

9

*p*

1

6

*f*

7

*f*

*p cresc.*

*mf cresc.*

8

*f*

*ff*

9

*ff*

4

Oboe I

Musical score for Oboe I, measures 10-12. The score is written in treble clef with a key signature of one sharp (F#). Measure 10 begins with a *ff* dynamic marking. A box containing the number 10 is placed above the first measure. The music consists of eighth and quarter notes. A 4-measure rest is indicated above the staff in the middle of measure 10. Measure 11 begins with a *ff* dynamic marking and a box containing the number 11. Measure 12 begins with a box containing the number 12 and the tempo marking *Più mosso*. The score continues with several staves of music, including a *p* dynamic marking in measure 12 and a repeat sign at the end of the section.



Peter Ilyich Tchaikovsky  
Swan Lake Suite, Op. 20a

Oboe II

No. 1 SCÈNE

Moderato

14

Ob. I

Ob. I

Ob. II

*ff*

*f*

*fff*

stringendo

2 Più mosso

4

10

# No. 2 VALSE

## Oboe II

INTRADO

Tempo di Valse

6 VALSE 31

Fl.  
HIL.

The musical score for Oboe II consists of ten staves of music. The first staff begins with an intrado section marked 'Tempo di Valse' and a dynamic of *f*. It includes a first ending bracketed '1' and a measure with a '6' above it. The second staff continues the intrado with a dynamic of *ff* and a first ending bracketed '1'. The third and fourth staves continue the intrado with a dynamic of *ff*. The fifth staff begins the valse section with a dynamic of *p* and a first ending bracketed '2'. The sixth staff continues the valse with a dynamic of *mf*. The seventh staff features a first ending bracketed '3' and measures with '8' and '2' above them, ending with a dynamic of *p*. The eighth and ninth staves continue the valse with a dynamic of *ff*. The tenth staff concludes the piece with a dynamic of *ff*. There are also markings for 'Fl. HIL.' in the first staff.

Oboe II

Musical score for Oboe II, measures 5 through 13. The score is written on ten staves in treble clef. The key signature is two sharps (F# and C#). Measure 5 is marked with a box containing the number 5 and a fermata. Measure 6 is marked with a box containing the number 6 and a fermata. Measure 7 is marked with a box containing the number 7 and a fermata. Measure 8 is marked with a box containing the number 8 and a fermata. Measure 9 is marked with a box containing the number 9 and a fermata. Measure 10 is marked with a box containing the number 10 and a fermata. Measure 11 is marked with a box containing the number 11 and a fermata. Measure 12 is marked with a box containing the number 12 and a fermata. Measure 13 is marked with a box containing the number 13 and a fermata. The score includes various dynamics such as *ff*, *p*, and *f*. There are also first and second endings indicated by '1.' and '2.' above the notes. The piece concludes with a final measure marked with a box containing the number 13 and a fermata.

### Oboe II

The musical score for Oboe II consists of ten staves of music. The first staff begins with a treble clef, a key signature of one flat (B-flat), and a time signature of 3/4. The first measure is marked with a piano (*p*) dynamic. The second measure is marked with a mezzo-forte (*mf*) dynamic and a crescendo (*cresc.*) instruction. A box containing the number 14 is placed above the second staff. The second staff continues with a fortissimo (*ff*) dynamic. The third staff shows a change in key signature to two sharps (D major). The fourth staff features a fortissimo (*ff*) dynamic. The fifth staff continues the melodic line. A box containing the number 15 is placed above the sixth staff. The sixth staff continues the melodic line. The seventh staff features a series of dotted half notes with slurs. The eighth staff continues the melodic line. The ninth staff features a series of eighth notes with slurs. The tenth staff concludes the passage with a final note.

## No. 3 DANCES DES CYGNES

### Oboe II

**Allegro moderato**

1

*p*

1

15

1

*p*

1

*p*

*ff*

## No. 4 SCÈNE

**Andante**

*p*

*Cadenza arpa*

*riteni molto*

*f*

### Oboe II

**1** **Andante non troppo**  
Violino Solo 25 *riten.* **2** **Più mosso**

**3** **mf** 12

**4** **p** **cresc.**

Oboe II

mf

*p* cresc.

ritenuto 2

Tempo I 20

Violino Solo

Ob. II

*p*

5

5

6

3

Detailed description: This block contains the musical score for Oboe II, measures 1 through 20. It consists of five staves. The first staff begins with a treble clef, a key signature of three flats (B-flat, E-flat, A-flat), and a time signature of 3/4. The first measure contains a circled number '5'. The dynamic marking *mf* is placed below the first staff. The second staff starts with a dynamic marking of *p* followed by *cresc.*. The third staff continues the melodic line. The fourth staff features a *ritenuto* marking above a circled '2', followed by a *Tempo I* marking above a circled '20'. Above this staff, the text 'Violino Solo' is written above a wavy line. The fifth staff begins with a circled '6' and includes a *p* dynamic marking. Above the staff, 'Ob. II' is written. The measure number '3' is circled at the end of the staff.

No. 5 DANSE HONGROISE. CZARDAS

(Чардаш)

Moderato assai

*f*

1 Allegro moderato 24

Fl. I

Ob. II

2 Vivace 19

Detailed description: This block contains the musical score for No. 5 Danse Hongroise, measures 1 through 19. It consists of four staves. The first staff begins with a treble clef, a key signature of two sharps (F#, C#), and a time signature of 3/4. The dynamic marking *f* is placed below the first staff. The second staff starts with a circled '1' followed by the tempo marking 'Allegro moderato' and the measure number '24'. The third staff is for Flute I (Fl. I) and features a circled '8' above the staff. The fourth staff is for Oboe II (Ob. II) and features a circled '2' followed by the tempo marking 'Vivace' and the measure number '19'. The dynamic marking *f* is placed below the first staff of this section.





## No. 6 DANSE ESPAGNOLE

### Oboe II

Allegro non troppo (Tempo di bolero)

Musical notation for Oboe II, measures 16-21. The key signature is two sharps (F# and C#), and the time signature is 3/4. Measure 16 starts with a fortissimo (ff) dynamic. Measure 17 has a first ending bracket labeled '1'. Measure 18 has a mezzo-forte (mf) dynamic. Measure 19 has a fortissimo (f) dynamic. Measure 20 has a fortissimo (f) dynamic. Measure 21 has a fortissimo (f) dynamic. A second ending bracket labeled '2' spans measures 20 and 21, leading to a key signature change to three sharps (F#, C#, and G#) at the end of measure 21.

Musical notation for Oboe II, measures 22-30. The key signature is three sharps (F#, C#, and G#). Measure 22 has a fortissimo (f) dynamic. Measure 23 has a fortissimo (f) dynamic. Measure 24 has a fortissimo (f) dynamic. Measure 25 has a fortissimo (f) dynamic. Measure 26 has a fortissimo (f) dynamic. Measure 27 has a fortissimo (f) dynamic. Measure 28 has a fortissimo (f) dynamic. Measure 29 has a fortissimo (f) dynamic. Measure 30 has a fortissimo (ff) dynamic.

**3** Lostesso tempo

Musical notation for Oboe II, measures 31-34. The key signature is three sharps (F#, C#, and G#). Measure 31 has a fortissimo (ff) dynamic. Measure 32 has a fortissimo (ff) dynamic. Measure 33 has a fortissimo (ff) dynamic. Measure 34 has a fortissimo (ff) dynamic.

**4** Più mosso

Musical notation for Oboe II, measures 35-38. The key signature is three sharps (F#, C#, and G#). Measure 35 has a fortissimo (ff) dynamic. Measure 36 has a fortissimo (ff) dynamic. Measure 37 has a fortissimo (ff) dynamic. Measure 38 has a fortissimo (ff) dynamic.

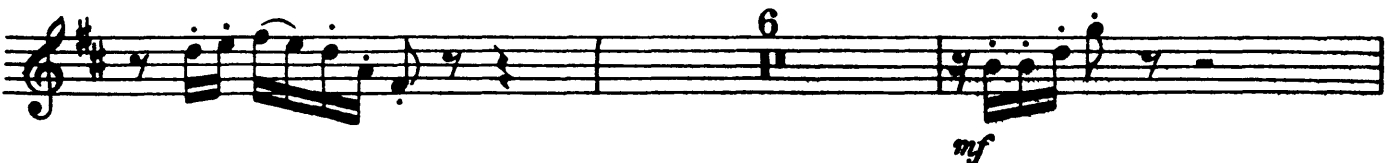
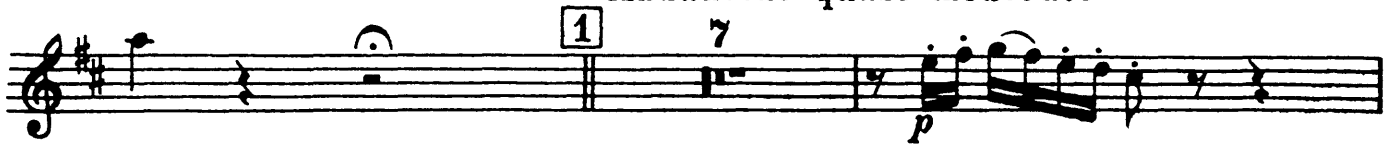
# No. 7 DANSE NAPOLITAINE

## Oboe II

**Allegro moderato**



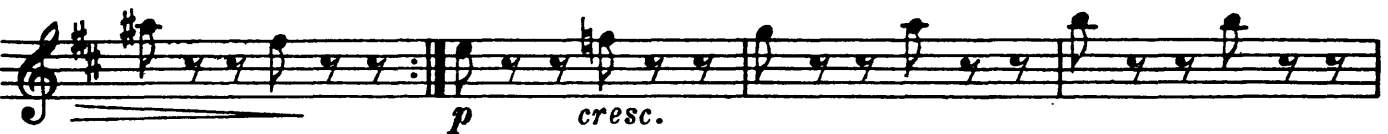
**Andantino quasi moderato**



**Molto più mosso**



**[2] Presto**



**[3]**



Oboe II

The musical score for Oboe II is written in G major (one sharp) and 3/4 time. It consists of ten staves of music. The first staff begins with a treble clef and a key signature of one sharp. The music features eighth and sixteenth notes, often beamed together. The second staff includes a first ending bracket and a dynamic marking of *p*. The third staff includes a dynamic marking of *p* and a *cresc.* marking. The fourth staff continues the melodic line. The fifth staff includes a first ending bracket with a '4' above it and a dynamic marking of *ff*. The sixth staff features dotted rhythms. The seventh staff continues the melodic line. The eighth staff features dotted rhythms. The ninth staff continues the melodic line. The tenth staff concludes the piece with a double bar line.

# No. 8 MAZURKA

## Oboe II

Tempo di mazurka

*ff*

1

*ff*

2

*ff*

3

1. 1 2. 1 3

*ff*

4

9

*p*

Oboe II

1

8 5 9

*p*

1

6 1 3 2 7 1

*f*

3 2

*p cresc.*

mf cresc. *f* *ff* 8

9 4

*ff*

Oboe II



**12** Più mosso

