

W.A. Mozart
Divertimento, K. 113

Oboe I.

Allegro.

Andante.

3 p A 3 p

f p

fp fp fp fp f p

1 3 p

f p 3

p f p

fp fp fp fp f

Andante.

p

f p

f 2 E 4 p

f 2

f 4 F 4 p

Oboe I.

Minnetto.



Fine.

Trio.



Minnetto D. C.

Allegro.



Wolfgang Amadeus Mozart
Divertimento, K. 113

Oboe II.

Allegro.

Andante.

The score includes various musical notations such as dynamics (*f*, *p*, *fp*), articulation (accents), and performance markings (triplets, first endings, and section letters A, B, C, D, E, F). The tempo changes from Allegro to Andante.

Oboe II.

Menuetto.

First staff: Treble clef, Eb major, 3/4 time. The melody begins with a quarter rest, followed by a quarter note G4, a quarter note A4, and a quarter note Bb4. The piece concludes with a double bar line and repeat signs.

Second staff: Treble clef, Eb major, 3/4 time. The melody continues with a quarter note C5, a quarter note Bb4, and a quarter note A4. It ends with a double bar line and the word "Fine." written below.

Trio.

Third staff: Treble clef, Eb major, 3/4 time. The section begins with a quarter rest, followed by a quarter note G4. The dynamics are marked *p* (piano). The piece concludes with a double bar line and repeat signs, and the text "Menuetto D.C." written below.

Allegro.

Fourth staff: Treble clef, Eb major, 2/4 time. The section begins with a quarter rest, followed by a quarter note G4. The dynamics are marked *f* (forte). The piece concludes with a double bar line and repeat signs.

Fifth staff: Treble clef, Eb major, 2/4 time. The melody continues with a quarter note A4, a quarter note Bb4, and a quarter note C5. The dynamics are marked *p* (piano). The piece concludes with a double bar line and repeat signs.

Sixth staff: Treble clef, Eb major, 2/4 time. The melody continues with a quarter note Bb4, a quarter note A4, and a quarter note G4. The dynamics are marked *f* (forte). The piece concludes with a double bar line and repeat signs.

Seventh staff: Treble clef, Eb major, 2/4 time. The melody continues with a quarter note F4, a quarter note G4, and a quarter note A4. The dynamics are marked *f* (forte). The piece concludes with a double bar line and repeat signs.

Eighth staff: Treble clef, Eb major, 2/4 time. The melody continues with a quarter note Bb4, a quarter note A4, and a quarter note G4. The dynamics are marked *f* (forte). The piece concludes with a double bar line and repeat signs.

Ninth staff: Treble clef, Eb major, 2/4 time. The melody continues with a quarter note F4, a quarter note G4, and a quarter note A4. The dynamics are marked *f* (forte). The piece concludes with a double bar line and repeat signs.

Tenth staff: Treble clef, Eb major, 2/4 time. The melody continues with a quarter note Bb4, a quarter note A4, and a quarter note G4. The dynamics are marked *f* (forte). The piece concludes with a double bar line and repeat signs.

Eleventh staff: Treble clef, Eb major, 2/4 time. The melody continues with a quarter note F4, a quarter note G4, and a quarter note A4. The dynamics are marked *f* (forte). The piece concludes with a double bar line and repeat signs.

Twelfth staff: Treble clef, Eb major, 2/4 time. The melody continues with a quarter note Bb4, a quarter note A4, and a quarter note G4. The dynamics are marked *f* (forte). The piece concludes with a double bar line and repeat signs.

W.A. Mozart Divertimento, K. 113

Corno inglese I.

Allegro.

Musical score for Corno inglese I, Allegro section. The score consists of eight staves of music. The first staff begins with a treble clef, a key signature of two flats (B-flat and E-flat), and a common time signature (C). The tempo is marked 'Allegro.' The dynamics range from *f* (forte) to *p* (piano). The score includes various musical notations such as slurs, accents, and fingerings. Key features include:

- Staff 1: Starts with *f*, followed by a triplet of eighth notes, then *p*. Marked with '3' and 'A'.
- Staff 2: Starts with *f*, followed by a triplet of eighth notes, then *p*. Marked with '3' and 'B'.
- Staff 3: Features repeated *fp* (fortissimo piano) markings, followed by *f*. Marked with '2'.
- Staff 4: Starts with *p*, followed by a triplet of eighth notes, then *f*. Marked with '1'.
- Staff 5: Starts with *f*, followed by a triplet of eighth notes, then *p*. Marked with '3' and 'C'.
- Staff 6: Starts with *f*, followed by a triplet of eighth notes, then *p*. Marked with '7' and 'D'.
- Staff 7: Starts with *fp*, followed by *fp*, *fp*, *fp*, and *f*. Marked with '1'.

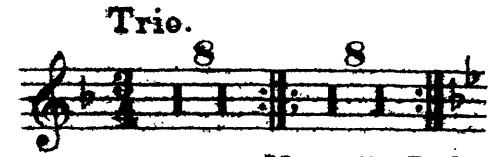
Andante.

Musical score for Corno inglese I, Andante section. The score consists of four staves of music. The tempo is marked 'Andante.' The key signature remains two flats (B-flat and E-flat), and the time signature changes to 3/4. The dynamics range from *f* (forte) to *p* (piano). The score includes various musical notations such as slurs, accents, and fingerings. Key features include:

- Staff 8: Starts with *p*. Marked with '1'.
- Staff 9: Starts with *f*, followed by *p*. Marked with 'E' and '4'.
- Staff 10: Starts with *f*, followed by *p*. Marked with '1' and '2'.
- Staff 11: Starts with *f*, followed by *p*. Marked with 'F' and '4'.

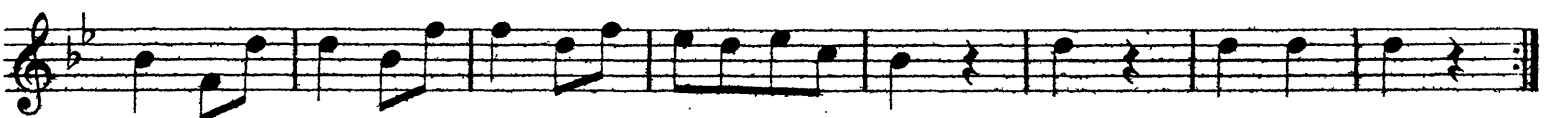
Corno inglese I.

Menuetto.



Menuetto D.C.

Allegro.



Wolfgang Amadeus Mozart
Divertimento, K. 113

Corno inglese II.

Allegro.

Andante.

Corno inglese II.

Mennetto.

Musical notation for the first part of the Minuet. It consists of two staves. The first staff begins with a treble clef, a key signature of two flats (B-flat and E-flat), and a 3/4 time signature. The melody starts with a quarter note G4, followed by eighth and quarter notes. A first ending bracket labeled '1' spans the final six measures. The second staff concludes with a double bar line and the word 'Fine.' Below the staff. To the right of this staff is the 'Trio' section, which begins with a new key signature of one flat (B-flat) and a 3/4 time signature. It consists of two measures, each with a fermata and a '8' above it, indicating an 8-measure repeat. This section is labeled 'Mennetto D. C.' below.

Allegro.

Musical notation for the second part of the Minuet, marked 'Allegro.' It consists of ten staves of music. The first staff begins with a treble clef, a key signature of two flats, and a 2/4 time signature. It features a piano (*p*) dynamic followed by a forte (*f*) dynamic. The second staff includes a first ending bracket labeled 'G' with a '12' above it. The third staff starts with a piano (*p*) dynamic and a first ending bracket labeled 'H' with a '7' above it. The fourth staff features a forte (*f*) dynamic. The fifth staff has a piano (*p*) dynamic and a first ending bracket labeled '8' above it. The sixth staff begins with a forte (*f*) dynamic and a first ending bracket labeled 'I' with a 'p' below it. The seventh staff has a piano (*p*) dynamic and a first ending bracket labeled 'f' below it. The eighth staff includes first ending brackets labeled 'K' with a '12' above it and 'L' with a '7' above it, and a piano (*p*) dynamic below. The ninth staff features a forte (*f*) dynamic and a first ending bracket labeled 'M' above it. The tenth staff concludes the piece with a double bar line.