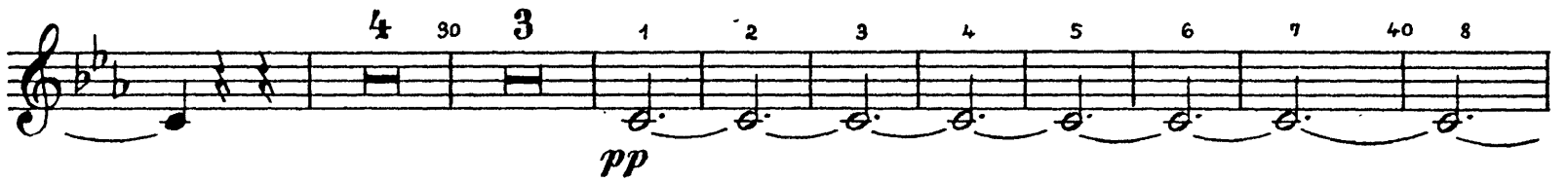


Antonín Dvorák
Symphony No. 1 in C Minor (*The Bells of Zlonice*)

I

OBOE I. *Maestoso*



Oboe I

The musical score for Oboe I consists of ten staves of music. The first staff begins with a treble clef, a key signature of two flats (B-flat and E-flat), and a common time signature. The dynamics start at *pp* and include a *cresc.* marking. The second staff features a tempo marking of 80 and four *fz* (forzando) markings. The third staff has a first ending bracket and a tempo marking of 90. The fourth staff includes a *p* dynamic and a *cresc.* marking. The fifth staff starts with a *mf* dynamic and a *f* dynamic. The sixth staff has a tempo marking of 110. The seventh staff includes a *f legato* marking and a *p* dynamic. The eighth staff has a *crescendo* marking and a *f* dynamic. The ninth staff has a tempo marking of 140 and a *ff* dynamic. The tenth staff has a tempo marking of 150 and a triplet marking.

Oboe I

240 *p legato* *f* *dimin.*

250 *pp* *tranquillo* *p*

260 *p* *f* *dim.* *pp*

270 *cresc.* *f*

280 *p* *dimin.*

290 *ppp* *ff*

300 *dolce*

p *crescendo* *f* *dim.*

310 *p* *pp*

320 *poco crescendo* *cresc.*

f

330 *pp*

340 *pp*

f *p*

350

crescendo *f*

360 *fz* *fz* *fz* *fz* *fz*

370 *fz* *fz* *fz* *f*

380 *diminuendo* *ritard.*

a tempo (vi - de) 390 3

pp *poco cresc.*

Detailed description: This page of a musical score for Oboe I in Dvorak's Symphony No. 1, measures 325-395. The music is in G major (one flat) and 4/4 time. It features a variety of dynamics including fortissimo (f), pianissimo (pp), fortissimo con sordina (fz), and piano (p). Performance markings include accents, crescendos, diminuendos, and a ritardando. The score includes a trill in measure 380 and a triplet in measure 390. The key signature has one flat (F major/D minor), and the time signature is 4/4.

Oboe I

cresc.
pp *ppp* 400
410 *pp*
420 7 *pp* 430
440
2 450 10 460 1 2
crescendo Cl. 1. *pp* *pp* *pp* *pp*
3 4 *pp* *cresc.* 470 *f*
marcato
480
f
490

The musical score for Oboe I in Dvorak's Symphony No. 1, measures 395-500, is presented in ten staves. The key signature is B-flat major (two flats). The score begins with a *cresc.* marking and a *pp* dynamic. A *ppp* dynamic is indicated at measure 400. The music features a variety of note values, including quarter, eighth, and sixteenth notes, often beamed together. Slurs and accents are used throughout. A *crescendo* marking appears at measure 450. A *Cl. 1.* marking is present at measure 460. Dynamics range from *pp* to *f*. The *marcato* marking is used at measure 470. The score concludes with a *f* dynamic at measure 490.

Oboe I

This musical score for Oboe I covers measures 495 to 580. The notation is written on a single treble clef staff. The key signature is two flats (B-flat and E-flat). The score includes various musical notations such as slurs, accents, and dynamic markings. Measure numbers 500, 510, 520, 530, 540, 550, 560, 570, and 580 are clearly marked. The dynamics range from *p* (piano) to *ff* (fortissimo). The score concludes with a double bar line at measure 580.

500 *p*

510 *f*

520 *ff*

530

540 *f* *p*

550

560 *cresc.* *f*

570 *crescendo* *ff* *p*

580 *f*

Oboe I

Musical score for Oboe I, measures 580-655. The score is written on ten staves in G major (one sharp) and 2/4 time. It features various rhythmic patterns, including eighth and sixteenth notes, and rests. Dynamic markings include *ff* (fortissimo) and *p* (piano). Measure numbers 590, 600, 610, 620, 630, 640, and 650 are indicated above the staves. The piece concludes with a fermata over the final note.

II

Adagio di molto

The musical score for Oboe I, Adagio di molto, consists of nine staves of music. The key signature is three flats (B-flat, E-flat, A-flat) and the time signature is 2/4. The score includes various dynamics and performance markings:

- Staff 1: *fp*, *fp*, *fp*, *fp*
- Staff 2: *Solo*, *p*
- Staff 3: *pp*
- Staff 4: *pp*, *p*
- Staff 5: *p*, *p*
- Staff 6: *p*
- Staff 7: *poco cresc.*, *fp*
- Staff 8: *fp*, *crescendo*
- Staff 9: *p*

Measure numbers are indicated at the beginning of several staves: 10, 20, 30, 40, 50, 60. Fingerings (1, 2) and breath marks (y) are also present throughout the score.

Oboe I

solo

pp

cresc.

pp

p

f

cresc.

mf

f

p

mf

cresc.

f

dimin.

p

pp

ppp

pp

pp

70

80

90

100

110

120

3

2

1

2

1 130 *p*

2 *p cresc.*

f

140 *ff* 8 150 1 *pp* 4

pp *stringendo* 160 *poco a poco crescendo*

dim. *p poco a poco cresc.*

f in tempo 170

1 *dim. f dim.* 180 2

p

190 *f dim.* *dim.*

3 200 1

ppp *p*

Detailed description: This page of a musical score for Oboe I in Dvorak's Symphony No. 1, measures 130-200. The score is written on ten staves. The key signature is three flats (B-flat, E-flat, A-flat). The time signature is 4/4. The music features various dynamics including *p*, *cresc.*, *f*, *ff*, *pp*, *ppp*, *dim.*, and *f*. Performance markings include *stringendo*, *poco a poco crescendo*, and *in tempo*. Measure numbers 130, 140, 150, 160, 170, 180, 190, and 200 are indicated. Fingerings (1, 2, 3, 4) and breath marks are present throughout the score.

Oboe I

III

Allegretto

3

p

10 8

f

dimin.

f *pp*

crescendo *mf*

cresc. *f* *mf* *p dim.*

pp

f *dim.* *f*

60

fp *fp*

Oboe I

70 *fp fp pp cresc. f*

2 80 3 *f*

90 *ff*

100 1 *in tempo rit. pp*

3 110 *crescendo*

6 120 3 *f mf*

f

1. 130 1 *dimin. p*

2. *pp* Archi 2 140 10

Oboe I

150 *mf* 3

160 *p* *crescendo* *mf* *cresc.*

170 *ff* *p dim.* *pp*

p *pp*

180 *mf*

dimin. *pp*

190 *cresc.*

mf *f*

200 *ff* *mf* *p*

3 210 3 *p* *cresc.* *f* *f*

ff

p *cresc.* *f*

p *calando* *pp*

Da capo al ♩ e poi la Coda

Coda

pp *crescendo*

f

ff

p

p

p

dimin. *p*

Oboe I

IV FINALE

Allegro animato

f

10 **1** *Solo*

p

20

30 *cresc.* *pp*

40 *crescendo* *mf*

50 *f*

60 *pp*

70

80 *p poco a poco crescendo*

1 90 2

f *p*

2 100

p *f*

110

mf *crescendo* *f*

120

ff

130

dimin.

140

pp *poco a poco cresc.*

150

f *pp*

160

pp *sempre*

p *crescendo* *f*

170

p *crescendo* *f*

180 10 190 8 9

p *crescendo* *f*

c. 2

Oboe I

Solo 200 *p* *cresc.*

210 *fp fp fp fp f* *dimin.* *p*

220 *f*

230

240 1 *f*

250

ff *p*

260 6 270 1 *f*

280 *ff*

Detailed description: This page contains the musical score for the Oboe I part, measures 200 through 280. The score is written on ten staves. It begins with a *Solo* marking and a *p* dynamic. The first staff (measures 200-209) features a melodic line with a *cresc.* marking. The second staff (measures 210-219) has a *fp* dynamic and a *dimin.* marking. The third staff (measures 220-229) starts with a *f* dynamic. The fourth staff (measures 230-239) continues the melodic line. The fifth staff (measures 240-249) has a *f* dynamic and a first ending bracket. The sixth staff (measures 250-259) has a first ending bracket. The seventh staff (measures 260-269) has a *ff* dynamic. The eighth staff (measures 270-279) has a *f* dynamic. The ninth staff (measures 280-289) has a *ff* dynamic. The tenth staff (measures 290-299) continues the melodic line.

290

p

300

p *pp*

310

p *fp* *fp*

1 320 5

mf *fz* *crescendo* *fz* *f*

340

fz *f*

350

f

360

f

370

cresc. *ff*

380

f *pp*

390

pp *f*

Oboe I

This musical score for Oboe I covers measures 400 to 500. The key signature is one sharp (F#) and the time signature is 3/4. The score is written on ten staves. Measure numbers 400, 410, 420, 430, 440, 450, 460, 470, 480, 490, and 500 are indicated above the notes. Dynamics include *pp*, *crescendo p*, *f*, *ff*, *fz*, and *p*. Performance markings include accents (>), slurs, and fingerings (1, 2, 3, 4, 5, 6, 7). A section starting at measure 450 is marked *ff* and *Fag. 1*. The score concludes with a *p* dynamic and a fermata over the final notes.

Oboe I

500 *cresc.* *mf* *f*

510

520

530 *dimin.*

540 *fp* *fp* *fp*

550 *fp*

560 *fp* 4

Detailed description: This page of a musical score for Oboe I in Dvorak's Symphony No. 1, measures 500-560. The music is written on ten staves. It begins with a *cresc.* marking and a *mf* dynamic. The melody features a series of eighth-note patterns that build in intensity to a *f* dynamic. A *ff* dynamic is reached in measure 510. The music then transitions to a *dimin.* section starting at measure 520, characterized by quarter notes with a dotted quarter rest. This is followed by a *fp* section with a melodic line of quarter notes. The score concludes with a *fp* dynamic and a final measure containing a whole note chord and a 4-measure rest.

Oboe I

570 *fp* *fp* *fp* *fp* *ff*

580

590 *p*

crescendo *f*

600 *fz* *fz*

610 *ff*

620

630 4 10 640 1 *Viol. I. pp* 4 5

650 *p* *cresc.*

f *dimin.*

Oboe I

This musical score for Oboe I covers measures 660 to 750. The notation is in treble clef with a key signature of one flat. The score includes various dynamics such as *p*, *f*, *ff*, *fz*, *fp*, and *p*, as well as performance markings like *crescendo* and *cresc.*. Measure numbers 670, 680, 690, 700, 710, 720, 730, 740, and 750 are clearly marked. The music features a variety of rhythmic patterns, including eighth and sixteenth notes, and rests. There are also some specific articulation marks like accents and slurs.

Oboe I

760 *ff*

Più allegro

770 *ff*

780 *fp fp fp fp f*

790

800 *ff*

810

820 1 1 1 *ff* 830

Detailed description: This page of a musical score for Oboe I in Dvorak's Symphony No. 1, measures 760-830. The score is written on ten staves. It begins at measure 760 with a dynamic marking of *ff*. The tempo is marked *Più allegro*. The music features various articulations such as accents and slurs, and includes dynamic markings like *fp* and *f*. Measure numbers 760, 770, 780, 790, 800, 810, 820, and 830 are clearly indicated. The score concludes with a double bar line at measure 830.

Antonín Dvorák
Symphony No. 1 in C Minor (*The Bells of Zlonice*)

I

OBOE II *Maestoso*

f *Allegro 1*

10 1 6 7 2 3 20 4 5

6 7 8 4 30 3 1 2 3 4

5 6 7 40 8 7 50

poco crescendo

60 *cresc.* *f*

70 *pp*

80 *cresc.* *fz fz fz fz* 1

Oboe II

90 1

p *p* *p*

cresc. *mf*

f

110 3

120 5 130 1 2 3 *cresc.*

f legato *p*

4 5 6 7 8 140 *f*

ff

150 *f*

160 *f*

2 170 *dim.* *f*

6 180 1 *p*

Detailed description: This page contains the musical score for the Oboe II part, measures 90 through 180. The score is written in a single system with ten staves. The key signature is B-flat major (two flats) and the time signature is 4/4. The music features a variety of dynamics and articulations. Measures 90-100 are marked *p* (piano) with hairpins indicating crescendos and decrescendos. Measure 100 is marked *cresc.* (crescendo). Measures 100-110 are marked *mf* (mezzo-forte). Measure 110 is marked *f* (forte). Measures 110-120 are marked *f legato*. Measures 120-130 are marked *p*. Measures 130-140 are marked *cresc.*. Measures 140-150 are marked *f*. Measures 150-160 are marked *ff* (fortissimo). Measures 160-170 are marked *f*. Measures 170-180 are marked *dim.* (diminuendo) and *f*. The score includes fingerings (1-5) and breath marks (1-3) throughout.

Oboe II

180 *f*

190 2 3

200

ff *p*

210 *p* *pp* *crescendo* *f*

220

230 1 *fz* *poco a poco cresc.* *fz* *f*

240 3 *p* *pp* *p legato*

f *dimin.*

tranquillo

250 2 1 *pp* *p*

260 *p* *f* *dim.* *pp*

270 1 *cresc.* 1

Detailed description: This page contains the musical score for Oboe II, measures 180 through 270. The score is written in a single system with ten staves. The key signature is two flats (B-flat and E-flat), and the time signature is 4/4. The music features a variety of dynamics, including fortissimo (ff), forte (f), mezzo-forte (fz), piano (p), pianissimo (pp), and fortissimo (ff) again. Performance instructions include 'poco a poco cresc.', 'tranquillo', and 'dimin.'. There are several slurs and phrasing marks throughout. Measure numbers 180, 190, 200, 210, 220, 230, 240, 250, 260, and 270 are clearly marked. Fingerings are indicated with numbers 1, 2, and 3. The score concludes with a 'cresc.' instruction and a first ending bracket.

Oboe II

f *p* *dimin.*

280 *ppp* *ff* 1. 2. 290

dolce

300 *p* *cresc.* *f*

310 *dim.* *p* *pp*

1 320 *p* *poco crescendo*

cresc. *f*

330 *pp* 3 *f*

340 *pp* *f*

350 *p*

crescendo *f*

Detailed description: This page of a musical score for Oboe II in D minor, measures 275-355. The score is written on ten staves. It begins with a forte (*f*) dynamic and a melodic line with a slur. A crescendo leads to a piano (*p*) dynamic. The music then softens to *ppp* and features a first ending (1.) and a second ending (2.) leading to measure 290, where it becomes fortissimo (*ff*). The piece continues with a *dolce* marking and a piano (*p*) dynamic. A crescendo leads to a forte (*f*) dynamic. The music then softens to *dim.* and *pp*. A first ending (1.) leads to measure 320, where it begins with a piano (*p*) dynamic and a *poco crescendo*. The music then features a crescendo to *f*. A triplet (3) begins at measure 330, starting with *pp* and reaching *f*. The music continues with a piano (*pp*) dynamic and a forte (*f*) dynamic. A piano (*p*) dynamic is marked at measure 350. The score concludes with a *crescendo* leading to a forte (*f*) dynamic.

Oboe II

470
pp *cresc.* *f*

marcato

480 *f*

490

p *p*

500 2 3 4 5 6 7 8 *cresc.*

f 510 *ff*

520

530 *f*

2 540 1 2 3 4 5 6 7 *p* *p*

Detailed description: This page contains the musical score for the Oboe II part, measures 470 through 540. The score is written on ten staves. The key signature is B-flat major (two flats). The time signature is 4/4. The piece begins at measure 470 with a *pp* dynamic, followed by a *cresc.* (crescendo) leading to a *f* (forte) dynamic. The music features a mix of quarter notes, half notes, and eighth notes, often with slurs and accents. At measure 480, the dynamic is *f*. At measure 490, the dynamic is *p*. At measure 500, the dynamic is *p*. At measure 510, the dynamic is *f*. At measure 520, the dynamic is *ff*. At measure 530, the dynamic is *f*. At measure 540, the dynamic is *p*. The score includes various performance markings such as *marcato*, *cresc.*, and *ff*. Measure numbers 470, 480, 490, 500, 510, 520, 530, and 540 are clearly marked at the beginning of their respective staves. Some measures have fingerings indicated by numbers 1, 2, 3, 4, 5, 6, 7, and 8.

Oboe II

8 9 550 10
cresc.

560
f *crescendo*

570 2
ff *p* *f* *f*

590 600

610
ff

620

630
ff

640

Oboe II

Musical notation for Oboe II, measures 1-650. The score consists of two staves. The first staff contains measures 1 through 650, with a fermata over the final measure. The second staff contains measures 651 through 700, ending with a double bar line.

II

Adagio di molto

Musical notation for Oboe II, measures 1-90. The score consists of eight staves. The first staff is labeled 'Adagio di molto' and contains measures 1-650. The second staff is labeled 'Ob. I. solo' and contains measures 1-30. The third staff contains measures 31-50. The fourth staff contains measures 51-60. The fifth staff is labeled 'Ob. I. solo' and contains measures 61-70. The sixth staff contains measures 71-80. The seventh staff contains measures 81-90. The eighth staff contains measures 91-100. Dynamics include *fp*, *p*, *poco cresc.*, *crescendo*, *pp*, *f*, *mf*, and *f*.

Oboe II

5 *mf* 100 *crescendo* *f*

diminu. *p* 2

110 1 5 120 6 *pp* *ppp* *pp*

1 130 *p* 4

ff 140

8 150 10 *string.* 3 *Ob. 4.* *p* *poco a poco cresc.*

in tempo 170

f *dim.* 1

180 2

6 190 4 4 200 1

p

Oboe II

III

Allegretto

3 3 10 20 10 30 5

mf

cresc. *f* *mf*

p dim. *pp*

2 1

50 1 *f* *dim.*

60 *f*

fp fp

70 *fp fp pp cresc. f*

2 80 3 *f*

90 *ff*

Oboe II

in tempo

rit. *pp*

crescendo *f*

6 120 10 130 4 2. 1 Archi 2

pp

140 10 150 3 *mf*

160 *p* *crescendo* *mf cresc.* *f*

170 *ff* *p dim.* *pp*

180 *mf*

190 *dimin.* *pp*

cresc. *mf* *p*

200 *f* *ff* *mf* *p* 3

Oboe II

210 *p* *cresc.* *f* *f* 3

220 *ff*

230 2 *f* *p* *pp* *calando* 1
Da Capo al Fine poi la Coda

Coda 1 240 1 *pp* *p* *crescendo*

tr *f* 250

ff

260 2

270

280

diminuendo *p*

IV FINALE

Allegro animato

10 1 8 20 10 30 2 5
Ob. 1. solo 8 20 10 30 2 5
Archi 7 40 5

Ob. 1. 6 7 8 9 10 1 2 3 f

60 pp

70

poco a poco crescendo 80

f 1 90 2 p

2 100 p

110 mf cresc. f

120 ff

Oboe II

130
dimin. *pp* *poco a poco cresc.*

140

150
f *pp* *pp sempre*

160
p crescendo

170
f

180 10 190 10 200 10 210 5 Ob. 1.
6 7

220
f

230
fp

240 1 1
fp *fp* *fp* *f*

250
ff

Detailed description: This page contains the musical score for the Oboe II part of Dvorak's Symphony No. 1, measures 130 through 250. The score is written on ten staves. It begins with measure 130, marked 'dimin.' and 'pp', with a 'poco a poco cresc.' instruction. Measure 140 is marked with a fermata. Measure 150 starts with a forte 'f' dynamic, followed by 'pp' and 'pp sempre'. Measure 160 is marked 'p crescendo'. Measure 170 is marked 'f'. Measure 180 includes performance instructions: '10' (fingerings), '10' (fingerings), '10' (fingerings), '5' (fingerings), and 'Ob. 1.' (first oboe). Measures 180-210 are marked with '6' and '7' (fingerings). Measure 220 is marked 'f'. Measure 230 is marked 'fp'. Measure 240 includes performance instructions: '1' (fingerings), '1' (fingerings), and dynamics 'fp', 'fp', 'fp', 'f'. Measure 250 is marked 'ff'.

Oboe II

260 10 270 1

f

280

ff

290

300

p

310

pp *p*

8 320 5 1 330

mf *fz* *cresc.* *fz* *f*

340

350

f

360

Detailed description: This page contains the musical score for the Oboe II part, measures 260 through 360. The score is written on ten staves. The key signature is one sharp (F#), and the time signature is 4/4. The music features a variety of dynamics, including fortissimo (ff), piano (p), pianissimo (pp), mezzo-forte (mf), and fortissimo (f). There are several accents and crescendo markings. The score includes fingerings (e.g., 8, 320, 5, 1, 330) and breath marks. The page number 15 is in the top right corner.

Oboe II

This musical score for Oboe II covers measures 370 to 470. The notation is in treble clef with a key signature of one flat (B-flat). The score includes various dynamics such as *cresc.*, *ff*, *f*, *pp*, *fz*, and *crescendo*. It features several triplet markings (3) and fingerings (1, 2, 3, 4, 5, 6, 7, 8). The music consists of a series of melodic lines with some rests and slurs. Measure numbers 370, 380, 390, 400, 410, 420, 430, 440, 450, 460, and 470 are clearly marked at the beginning of their respective lines.

Oboe II

485 *f* 2

490 1 *p* 2 *p*

500 *mf crescendo*

510 *f* *ff*

520

530 *diminuendo* *fp* *fp*

540 *fp* *fp* *fp* *fp* *fp* *fp*

550 *fp* *fp* 560 4

570 *fp* *fp* *fp* *fp* *ff*

580

590 *p*

Detailed description: This page of a musical score for Oboe II in Dvorak's Symphony No. 1, measures 485-590. The score is written on ten staves of music. It begins with a dynamic marking of *f* and a first ending bracket. The music features various dynamics including *p*, *mf crescendo*, *f*, *ff*, *diminuendo*, *fp*, and *p*. There are several accents and slurs throughout. The key signature changes to one flat (B-flat) at measure 560. The score concludes with a first ending bracket and a final dynamic marking of *p*.

Oboe II

crescendo *f*

600 *ff* *ff*

610 *ff*

620 *tr* *tr*

4 630 10 640 10 650 10 660 1 Ob. I.
2 3 4

670 *f*

680 *p* *p*

690 *p*

cresc. 700 *f*

710 *ff*

Detailed description: This page of a musical score for Oboe II in Dvorak's Symphony No. 1, measures 580-710. The music is written on ten staves. It begins with a *crescendo* and *f* dynamic. Measure 600 features a *ff* dynamic. Measure 610 is marked *ff*. Measure 620 includes trills. A first oboe (Ob. I.) part is indicated from measure 660. Measure 670 is marked *f*. Measure 680 is marked *p*. Measure 690 is marked *p*. Measure 700 is marked *cresc.* and *f*. Measure 710 is marked *ff*. The score includes various musical notations such as slurs, accents, and dynamic markings.

Oboe II

720

730

740

750

760

770

Più allegro

780

790

ff

fz

fp

p

crescendo

f

ff

ff

fp

fp

fp

ff

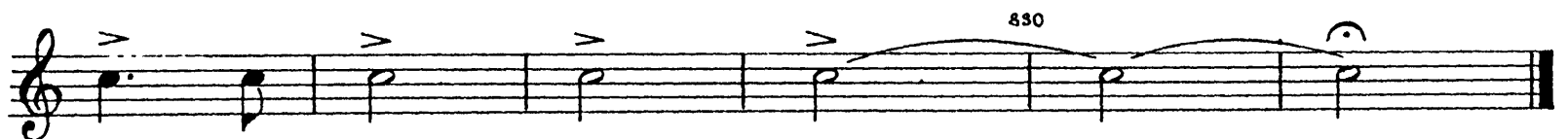
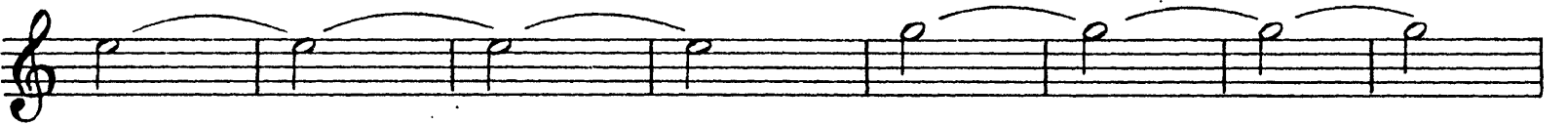
Detailed description: This page contains the musical score for the Oboe II part, measures 720 through 790. The score is written on ten staves. Measures 720-730 are in a moderate tempo. At measure 740, the tempo changes to 'Più allegro'. The score includes various dynamics such as *ff*, *fz*, *fp*, *p*, and *crescendo*. There are also accents, slurs, and a triplet in measure 750. The key signature has one sharp (F#).

Dvorak — Symphony No. 1

The Orchestra Musician's
CD-ROM LIBRARY™

20

Oboe II



Antonín Dvorák
Symphony No. 1 in C Minor (*The Bells of Zlonice*)

I

CORNÒ INGLESE

Maestoso 7 1 Allegro 1 10 1 276 1. 2 2. 1 290 90

380 2 *a tempo* (vi - de) 390 1

ritard.

5 4 5 6 7 8 9 10 1

Viol. 1. *bd.* Ob. 1. 400

2 9 4 5 6 7 8 9 *ppp* *fz*

fz *fz* *fz* *fz* *fz* *fz* *fz*

410 *fz* *fz* *fz* *fz* *fz* *fz* *fz*

tacet

fz *fz*

II. III. IV. TACET